



Taiala ua faaliliuina o pepa talosaga mo se NZeTA



E fesoasoani le taiala leni ia te oe ia sa’o lelei ai le faatumuina o lau talosaga mo se NZeTA (New Zealand Electronic Travel Authority).

VAEGA 1: Auala e faatumu ai lau talosaga mo se NZeTA

E lima laasaga o le faagasologa o le talosaga e aofia ai le:

- › Laasaga 1: Faamatalaga o le tagata malaga
- › Laasaga 2: Ata o le tagata malaga
- › Laasaga 3: Toe iloilo ma faamaonia faamaumauga
- › Laasaga 4: Tautinoga
- › Laasaga 5: Totogi ma tuuina mai talosaga

VAEGA 2: Tulaga mautinoa pe a mae’a ona tuuina mai lau talosaga

VAEGA 1: Auala e faatumu ai lau talosaga mo se NZeTA

E tatau ona moni ma sa’o lau talosaga. E ono lē mafai ona e malaga pe afai e lē sa’o faamatalaga na tuuina mai.

O le vaega muamua o le pepa talosaga e faatumu ai faamatalaga o loo i lau tusifolau po o le tagata o loo e fesoasoani e faatumu lana talosaga mo se NZeTA. E tatau i tagata malaga taitasi ona faatumu faamatalaga o moomia i se isi pepa talosaga.

LAASAGA 1: Faamatalaga o le tagata malaga

Tagatanuu

Tagai i le vaega o loo ta’ua ai ‘Nationality’ i lau tusifolau.

Select your nationality as shown on the passport you will be travelling on*[?]

Filifili lou tagatanuu e pei ona tusia i lau tusifolau o faaaogā i lau malaga

Atunuu na tuuina atu ai

Tagai i le vaega o loo ta’ua ai le ‘Code’ po o le ‘Issuing country’ i lau tusifolau.

O lou atunuu moni, o le atunuu lava lea na tuuina atu ai lau tusifolau, tusa lava pe na toe faafou lau tusifolau i le ofisa o le amapasa po o le ofisa komesina i totonu o se isi atunuu.

Select the issuing country as shown on your passport*[?]

Filifili le atunuu na tuuina atu lau tusifolau e pei ona tusia i lau tusifolau

Numera o le tusifolau

Tusi le numera o lau tusifolau ia tutusa lelei ma le numera o loo tusia i lau tusifolau Afai e sese le tusiga o faamatalaga, e ono lē mafai ona e malaga i Niu Sila.

Fautuaga faaopoopo i le faiga ia sa’o lelei ai le tusiga o numera o le tusifolau

- › Tusi le numera o le tusifolau o loo i le pito i luga o le itulau o iai faamatalaga o le tusifolau. Aua e te tusia le numera o loo i le itulau muamua o lau tusifolau, po o le numera i le pito i lalo o le itulau lea e iai lou ata.
- › O le tele o numera o tusifolau e valu i le 11 le tele o fuainumera ma mataitusi e iai. Afai e maualalo ifo pe maualuga atu le telē o le numera e te tusia nai lo le aofaiga ua ta’ua, toe siaki poo sa’o le numera lea o loo e faaogāina.
- › O numera tusifolau e aofia faatasi ai mataitusi ma fuainumera. Maitau lelei le mataitusi O ma le fuainumera o, ma le mataitusi I ma le fuainumera 1.
- › Aua ne’i tusia ai ni faailoga faapitoa, e pei o se vase puupuu, poo se va i upu.

Enter your passport number exactly as it appears on your passport *

Tusi le numera o lau tusifolau ia tutusa lelei ma le numera o loo tusia i lau tusifolau

Aso e uma ai le aogā o le tusifolau

Filifili le aso e uma ai le aogā e pei ona tusia i lau tusifolau. Afai ua lata mai le aso e uma ai le aogā o lau tusifolau, e tatau ona fai se tusifolau fou a o lei tuuina atu lau talosaga mo se NZeTA.

Select the expiry date as shown on your passport *

Day Month Year

Filifili le aso e uma ai le aogā o lau tusifolau e pei ona tusia i lau tusifolau
Aso Masina Tausaga

Fesili mo tagata o tauaveina tusifolau mai isi atunuu o loo moomia se visa e asiasi ai i Niu Sila. Afai e te malaga mai se atunuu e lē moomia le faia o se visa e ulufale ai i Niu Sila, tagai i le vaega o faamatalaga mo tagata malaga.

Are you an Australian permanent resident? * ?

No Yes

O oe o se tagata nofomau Ausetalia?
Leai Ioe

Afai e te filifili le Ioe, e tatau ona iai sau visa nofomau Ausetalia o loo aogā i le taimi nei e faataga ai ona e toe foi i Ausetalia mai atunuu mamao.

Afai e te filifili le 'leai' o le isi fesili e tali, pe e te malaga i Niu Sila i se vaa folau. Afai e te malaga i le vaalele i Niu Sila e fuafua ai mo se faigamalaga i luga o se vaa, e tatau ona e talosaga mo se visa ae e te lei malaga ese.

Are you travelling to New Zealand on a cruise ship? *

No Yes

E te malaga i se vaa folau i Niu Sila?
Leai Ioe

Afai e te filifili le 'leai', o le isi fesili e tali, pe e te afea le Auckland International Airport mo le faaaau ai o se faigamalaga agai atu pe toe foi mai ai mai Ausetalia.

Are you a transit passenger passing through Auckland International Airport on your way to or from Australia? *

No Yes

O e malaga faaaau e faatali se malaga i le Auckland International Airport e agai atu pe toe foi mai ai mai Ausetalia?
Leai Ioe

Afai e te afea Niu Sila e faaaau ai se faigamalaga e faamoemoe mo isi atunuu e ese mai Ausetalia, e tatau ona e talosaga mo se Visa Faaauau ae e te lei malaga ese, se’i vaganā o oe o se tagatanuu o se atunuu e tuusaunoa ai le faia o visa faaaauau.

E te ono lē agavaa mo le faia o se talosaga mo se NZeTA, ma e fuafua lava i au tali na e tuuina mai.

Faamatalaga o le tagata malaga

Tusi igoa ia tutusa lelei ma igoa o loo tusia i lau tusifolau.

Tusi UMA igoa e pei ona tusia i lau tusifolau.

Afai e iai sou igoa lona lua, tusi i le avanoa e tataua ona tusi ai.

Afai e leai sou faaiu, tusi lou igoa ua faaigoa ai oe i le avanoa e tusi ai le faaiu ae faaavanoa pea le vaega e tusi ai lou igoa.

Afai e ese se igoa e iloa ai oe, filifili le ioe ma tusi faamatalaga i le vaega e tusi ai le faaiu ma igoa muamua.

Manatua: O le vaega lea e mafai ona faaogā i ai mataitusi a-z / A-Z, va, koma (,), komaliliu ('), vase (-) ma faailoga faamamafa.

Traveller details

Enter your family/last name(s) as shown on your passport *

Enter your given name(s) including your middle name as shown on your passport ?

Have you ever been known by a different name? *

No Yes

Faamatalaga o le tagata malaga

Tusi lou faaiu e pei ona tusia i lau tusifolau

Tusi ou igoa e aofia ai lou igoa lona lua e pei ona tusia i lau tusifolau

Na iai se taimi na iloa ai oe i se isi igoa?

Leai Ioe

Itupa, aso fanau, atunuu ma le nuu na fanau ai

Faailoa lou itupa, aso fanau, atunuu (filifili mai le lisi) ma le nuu (aai/taulaga/nuu) na e fanau ai, ia tutusa lelei ma faamatalaga o loo tusia i lau tusifolau.

Select your gender as shown on your passport *

Female Male Gender Diverse

Select your date of birth as shown on your passport *

Day Month Year

Enter your place of birth * ?

Select your country of birth *

Filifili lou itupa e pei ona tusia i lau tusifolau

Tamaitai Alii Itupa Eeseese

Filifili lou aso fanau e pei ona tusia i lau tusifolau

Aso Masina Tausaga

Tusi le nuu na e fanau ai

Filifili le atunuu na e fanau ai

National Identity Number

Afai e iai sau National Identity Number, tusi ia tutusa lelei ma le tusiga o loo i lau tusifolau poo isi pepa faamaonia o le tagatanuu.

Afai e leai sau National Identity Number, taatia fua le vaega lea.

Enter your National Identity Number, if you have one

Tusi lau National Identity Number, pe afai e iai sau numera lea

Tuatusi o le imeli

Ia mautinoa o faaaogā lau tuatusi o le imeli. O le a faaaogā le imeli lea e faafesootai atu ai oe e uiga i lau talosaga. O matua o fai ma sui o fanau e talosaga se NZeTA mo le fanau laiti, e mafai ona tuu i ai le tuatusi o le imeli a matua pe a manatu i ai. E tatau ona e toe tusia le tuatusi o lau imeli e mautinoa ai o loo sa' o.

<p>Enter a valid email address * </p> <input type="text"/>	← Tusi se tuatusi o le imeli o loo faaaogā
<p>Confirm email address *</p> <input type="text"/>	

Fesili mo tagata o tauaveina tusifolau mai isi atunuu e lē moomia se visa e asiasi ai i Niu Sila. Afai e te malaga mai se atunuu e moomia ai le faia o se visa e ulufale ai i Niu Sila, tagai i fesili mo tagata e agavaa.

<p>Are you an Australian permanent resident? * </p> <p><input type="radio"/> No <input type="radio"/> Yes</p>	← O oe o se tagata nofomau Ausetalia? Leai <input type="radio"/> Ioe <input type="radio"/>
---	---

Afai e te filifili le 'ioe', e tatau ona iai sau visa nofomau Ausetalia o loo aogā i le taimi nei e faataga ai ona e toe foi i Ausetalia mai atunuu mamao.

Afai e te filifili le 'leai', o le isi fesili e tali, pe e te fuafua e nofo i Niu Sila pe e te malaga faaaauu i se isi atunuu.

<p>Will you be staying in New Zealand? * </p> <p><input type="radio"/> Yes. I will be coming to New Zealand to visit</p> <p><input type="radio"/> No. I am a transit passenger</p>	← E te fuafua e te nofo i Niu Sila? Ioe. Ou te malaga e tafao i Niu Sila <input type="radio"/> Leai. Ou te malaga faaaauu <input type="radio"/>
--	---

Afai e te malaga faaaauu i se isi atunuu, na o le taimi e te malaga faaaauu ai e aogā ai lau NZeTA.

Afai o e fuafua e te tuua le malaevaalele ma ulufale i totonu o Niu Sila, e tatau ona e filifili le 'ioe' ma totogi le International Visitor Conservation and Tourism Levy (IVL).

E te ono lē agavaa mo le faia o se talosaga mo se NZeTA, ma e fuafua lava i au tali na e tuuina mai.

Fesili mo tagata e agavaa

O le a e tali i nisi o fesili e fesoasoani ai i galuega a le Immigration New Zealand (INZ) e faamautinoa ai pe e te agavaa e malaga mai i Niu Sila e aunoa ma se visa. E aofia ai tulaga poo e malaga mai e saili fesoasoani faafomai, pe sa aveesea faamalosi oe mai Niu Sila, pe o tapu ona e toe ulufale mai i Niu Sila pe sa e nofosala foi i le tulafono.

<p>Eligibility questions</p> <hr/> <p>Will you be travelling to New Zealand for medical consultation or treatment? *</p> <p><input type="radio"/> No <input type="radio"/> Yes</p> <p>Have you ever been deported, removed or excluded from another country (not New Zealand)? *</p> <p><input type="radio"/> No <input type="radio"/> Yes</p> <p>Are you currently prohibited from entering New Zealand following deportation from New Zealand in the past? *</p> <p><input type="radio"/> No <input type="radio"/> Yes</p> <p>Have you ever been convicted of any offence (in any country)? *</p> <p><input type="radio"/> No <input type="radio"/> Yes</p>	← Fesili mo tagata e agavaa	
		E te malaga i Niu Sila mo le sailia o fesoasoani faafomai poo togafitiga? Leai <input type="radio"/> Ioe <input type="radio"/>
		Na iai se taimi na aveesea faamalosi, aveesea pe na faasā ai oe mai se isi atunuu (e lē o Niu Sila)? Leai <input type="radio"/> Ioe <input type="radio"/>
		O tapu i le taimi nei ona e ulufale i Niu Sila talu ona aveesea faamalosi oe mai Niu Sila i taimi ua tuanai? Leai <input type="radio"/> Ioe <input type="radio"/>
	Na iai se taimi na faamaonia ai se solitulafono na e faia (i soo se atunuu)? Leai <input type="radio"/> Ioe <input type="radio"/>	

Afai na faamaonia moliaga o sau solitulafono o le isi fesili e tali, po o le ā le umi na e nofosala ai i le falepuipui.

<p>Have you ever been deported, removed or excluded from another country (not New Zealand)? *</p> <p><input type="radio"/> No <input type="radio"/> Yes</p> <p>Are you currently prohibited from entering New Zealand following deportation from New Zealand in the past? *</p> <p><input type="radio"/> No <input type="radio"/> Yes</p> <p>Have you ever been convicted of any offence (in any country)? *</p> <p><input type="radio"/> No <input type="radio"/> Yes</p>	<p>Na iai se taimi na aveesea faamalosi, aveesea pe na faasā ai oe mai se isi atunuu (e lē o Niu Sila)?</p> <p>Leai Ioe</p> <p>O tapu i le taimi nei ona e ulufale i Niu Sila talu ona aveesea faamalosi oe mai Niu Sila i taimi ua tuana'i?</p> <p>Leai Ioe</p> <p>Na iai se taimi na faamaonia ai se solitulafono na e faia (i soo se atunuu)?</p> <p>Leai Ioe</p>
--	---

E te ono lē agavaa mo le faia o se talosaga mo se NZeTA, ma e moomia le talosaga mo se visa, ma e fuafua lava i au tali na tuuina mai.

LAASAGA 2: Tuuina mai lou ata

Tuuina mai se ata e iloa lelei ai ou foliga. E mafai ona tuuina mai se ata na pu'e talu ai nei pe faaaogā lau telefoni feaveai e pu'e ai se ata. E siaki e le faiga o loo i le initaneti poo fetau lelei lou ata. Afai e lē talia lou ata, e faailoa atu lava le faiga e toe pu'e lelei ai lou ata. E masani ona talia lou ata pe afai na pu'e e se tagata pu'eata faapitoo. Taumafai e faaaogā se ata tusifolau o iai i le taimi nei pe a iai se ata ua uma ona pu'e.

Photo requirements

Your photo must:

- › show you looking straight at the camera
- › show you with your eyes open and with a neutral expression
- › have nothing covering your eyes or face, such as sunglasses or hair
- › shows only you
- › not to be too bright or too dark and have a plain, light coloured background

Ituaiga ata e taliaina

E tatau i lou ata ona:

- › iloa atu o loo e titilo sa'o lava i le meapu'eata
- › iloa atu o loo matala lelei le pupula o ou mata ma sasa'o lelei ou foliga
- › leai se mea o pupunia ou mata poo foliga, e pei o se matatioata pogisa poo lauulu.
- › na o oe o loo iloa i le ata
- › aua ne'i sesega tele pe pogisa tele ma ia pu'e i luma o se mea e lē lanu, pe lanu vaivai

Ata e taliaina mo se visa poo se NZeTA

www.immigration.govt.nz/new-zealand-visas/apply-for-a-visa/tools-and-information/acceptable-photos

Tuu lou ata i luga o le initaneti

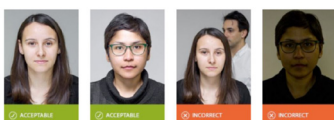
Ia laitiiti ifo ma le 10 MB le telē o lou ata, ma ia faaaogā le ituaiga faila o le .JPG po o le .JPEG

Toso lou ata i le pusa o faaali atu i lau masini pe filifili le 'upload your photo' e maua ai le faila o teu ai le ata i lau komepiuta.

Tuu lou ata i luga o le initaneti

Ia laitiiti ifo ma le 10 MB le telē o lou ata, ma ia faaaogā le ituaiga faila o le .JPG po o le .JPEG

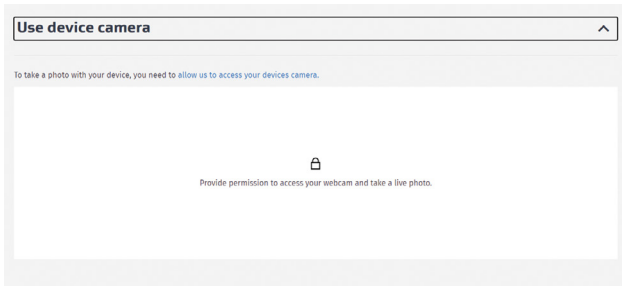
Toso lou ata i le pusa o faaali atu i lau masini pe filifili le 'upload your photo' e maua ai le faila o teu ai le ata i lau komepiuta.



Faaaogāina o telefoni feaveai

A fia pu'e lou ata e faaaogā ai lau telefoni, e moomia ona mafai e lau telefoni ona faaaogā le webcam ma mafai ona pu'e le ata i le taimi lava lea.

Faamolemole ia manatua o polokalame e mafai ona faaaogā ai le faiga lea o - ituaiga fou o le Chrome, Firefox, Edge po o le Safari. E ono faailoa atu e lau masini e te tago e faaaogā polokalame fou nei pe afai e lē mafai e le polokalame o faaaogā i le taimi nei i lau masini ona faaaogā le faiga lea.



Faaaogāina o telefoni feaveai

A fia pu'e lou ata e faaaogā ai lau telefoni, e moomia ona mafai e lau telefoni ona faaaogā le webcam ma mafai ona pu'e le ata i le taimi lava lea.

Faamolemole ia manatua o polokalame e mafai ona faaaogā ai le faiga lea o - ituaiga fou o le Chrome, Firefox, Edge po o le Safari. E ono faailoa atu e lau masini e te tago e faaaogā polokalame fou nei pe afai e lē mafai e le polokalame o faaaogā i le taimi nei i lau masini ona faaaogā le faiga lea.

O feau nei e te iloa ai e lē o sa'o le polokalame o faaaogā:

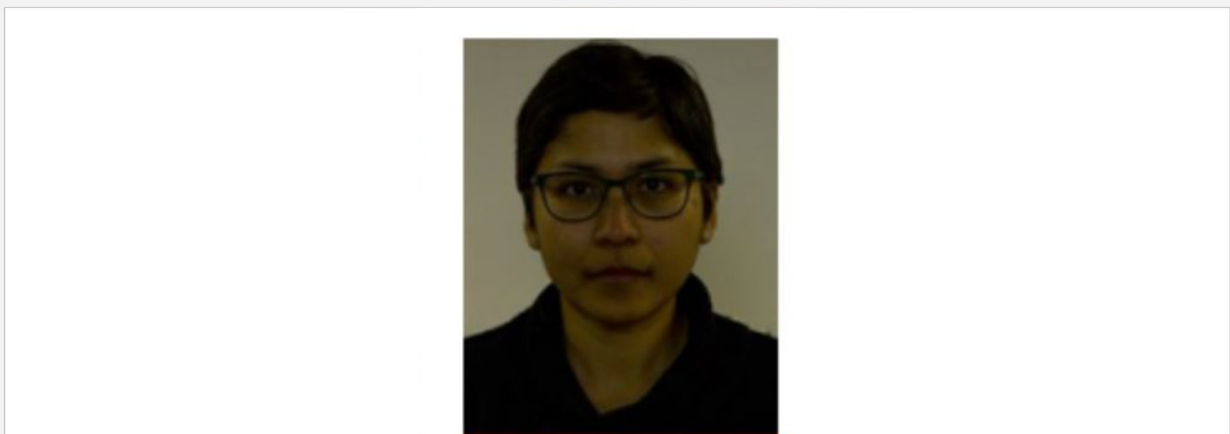


faailoga lanu moli - A fia pu'e lou ata e faaaogā ai lau telefoni, e moomia ona mafai e lau telefoni ona faaaogā le webcam o lau telefoni ma mafai ona manino le puega o lou ata.

Your photo has not passed the checks for these reasons:

- your photo resolution is not high enough
- your photo is too dark or too bright
- the face image must not be too large or too small
- your photo appears to have shadowing on the face
- your face appears to be leaning to the side in your photo
- you must look directly at the camera in your photo
- the photo does not appear to meet our size requirements

Find out how to fix your photo by looking at our [error message guidance](#).
[Uploading a visa or NZeTA photo - error messages](#)



You seem to be having trouble passing the photo quality check. If you have uncommon facial characteristics and our system cannot detect your face, we can manually review your photo instead.

UPLOAD ANOTHER PHOTO

REQUEST REVIEW

auala e toe iloilo sa'o ai - E iloa tonu ai e lē o lelei le ata na e pu'eina. E mafai ona e filifili le ki 'Request Review' pe afai e te manao e siaki e se isi tagata lou ata.

LAASAGA 3: Faamaonia ma toe iloilo

A o lei tuuina mai lau talosaga, toe iloilo poo sa'o. la mautinoa o loo moni ma sa'o. E mafai ona e toe foi i tua e fai ni faasa'oga ae e le mafai ona e faamauina ou faamaumauga ma toe silasila i lau pepa talosaga i luga o le initaneti pe afai ua e alu ese mai le upega tafailagi.

O le tusia o faamatalaga e le sa'o e ono umi ai ona faatali lau NZeTA po o le teena foi o lau talosaga, ma e ono taofia ai ona e malaga i se faigamalaga i le vaalele poo se vaa folau.

LAASAGA 4: Tautinoga

O le a faaaogā e le INZ faamatalaga ua e tuuina mai i lau pepa talosaga e iloa ai oe ma suesue ai lau talosaga mo se NZeTA.

O le a avea faamatalaga nei o se vaega o faamaumauga o loo faamauina e le New Zealand Immigration e uiga ia te oe.

E tatau foi ona e tautino i le moni ma le sa'o o faamatalaga ua e tuuina mai ma ua e faamalieina tulaga uma e mafai ai ona e malaga i Niu Sila.

Mo le faamaonia o lau talosaga, e tatau ona e togia pusa e lua e faamaonia ai ua e

- › faitau ma ioeina le tautinoga
- › faitau ma malamalama i faamatalaga e le faalauaitelaina.

To the best of my knowledge the information I have provided in this form is accurate and I have answered the questions truthfully and correctly.

I understand that it is my responsibility to ensure that the passport details provided in this form match the details on the passport I intend to use when I travel to New Zealand. I have checked these details to confirm they are correct.

I understand that I must meet all other requirements to travel to New Zealand.

I understand that INZ may provide information to other agencies in New Zealand and overseas where such disclosure is required or permitted by the Privacy Act 1993, or otherwise required or permitted by law. I understand my information may be used to improve INZ's services and administration of the Immigration Act 2009.

I authorise INZ to provide information about my eligibility to travel to New Zealand, including about my NZeTA to a carrier, including via an approved online enquiry system, in order to facilitate my travel.

You must confirm the following:

- I have read and agree to this declaration
- I have read and understand the [Privacy Statement](#)

Ou te tautino ma lo'u malamalama atoatoa i le sa'o o faamatalaga ua ou tuuina atu i le pepa talosaga ma ua ou talia fesili ma le faamaoni ma le sa'o.

Ou te malamalama o lo'u tiute le faamautinoa o loo tutusa faamatalaga o la'u tusifolau o loo tusia i le pepa talosaga ma faamatalaga o loo tusia i le tusifolau e tusa ai ma a'u fuafuaga ou te malaga i Niu Sila. Ua mae'a ona ou siakiina ma faamaonia e sa'o faamatalaga nei.

Ou te malamalama e tatau ona ou faamalieina isi tulaga moomia uma mo le malaga ai i Niu Sila.

Ou te malamalama e ono faailoa atu e le INZ faamatalaga i isi faalapotopotoga i totonu o Niu Sila ma atunuu mamao e tusa ai ma tuutuuga ua tãpã pe faatagaina e le Privacy Act 1993, poo isi tulaga ua faatonuina pe faatagaina e le tulafono. Ou te malamalama e ono faaaogã o'u faamatalaga e faaleleia ai auunaga a le INZ ma le faatautaia o le Immigration Act 2009.

Ou te tuuina atu le faatagana i le INZ e faailoa faamatalaga e tusa ai ma lo'u agavaa e malaga atu ai i Niu Sila, e aofia ai la'u talosaga mo se NZeTA i se kamupani vaalele, e aofia ai faiga faainitaneti ua aloaia e tusa ai ma ni faafesili, mo le faagaioiga o la'u malaga.

E tatau ona e faamaonia tulaga o loo ta'ua i lalo:

Ua ou faitau ma ioeina le tautinoga leni

Ua ou faitau ma malamalama i le [Privacy Statement](#)

LAASAGA 5: Totogi ma tuuina mai le talosaga

E NZD \$12 mo le tagata toatasi o le a tãpã e totogi mo lau NZeTA. O le isi vaega o le fefaatauaiga lava lea, o le toatele o tagata asiati o le a tãpã foi le totogi o le International Visitor Conservation and Tourism Levy (IVL) e NZD \$35.

O le taimi lava e te kiliki ai le 'Pay and submit' e tatau ai loa ona e tusia ai ma faamaumauga o lau credit card (Visa po o le MasterCard) e faamae'a lelei ai lau fefaatauaiga.

Purchase Summary		Aotelega o le Talosaga e Totogi	
New Zealand Electronic Travel Authority (NZeTA) fee*	\$12.00	New Zealand Electronic Travel Authority (NZeTA) totogipau*	\$12.00
International Visitor Conservation and Tourism Levy	\$35.00	International Visitor Conservation and Tourism Levy	\$35.00
Total	NZD \$47.00	Aofaiga	NZD \$47.00

***Where applicable, GST is included.**

The International Visitor Conservation and Tourism Levy (IVL) is a way for you to contribute directly to the tourism infrastructure you use and to help protect and enhance the natural environment you will enjoy during your stay in New Zealand. Find out more about the IVL at www.mbie.govt.nz/IVL.

***Pe a talafeagai ai, e aofia ai ma le GST.**

O le International Visitor Conservation and Tourism Levy (IVL) o se auala e mafai ai ona tuuina sa'o atu se vaega tupe i atinae tau turisi e te faaaogaina ma fesoasoani e puipuia ma faaleleia ai le siosiomaga faalenatura mo le manaia o lou nofo ai i Niu Sila. E maua nisi faamatalaga e uiga i le IVL i le www.mbie.govt.nz/IVL.

VAEGA 2: Tulaga mautinoa i le mae'a ai ona tuuina mai o lau talosaga

A mae'a ona totogi lau NZeTA, pe a ma nai minute ona e maua lea o se lisiti i le imeli mai le INZ e faamaonia ai ua uma ona totogi lau talosaga.

O le toatele o tagata malaga, o le a maua se imeli e faamaonia ai ua amata faagasolo le talosaga mo se NZeTA i totonu o le 10 minute talu ona tuuina atu a latou talosaga.

Itu e manatua

- › Siaki poo sa'o le numera tusifolau na lafo atu ai le faamaoniaga mai le NZeTA ma le numera o loo iai i lau tusifolau. Afai e sese le numera o le tusifolau na e tusia, e ono lē mafai ona e malaga i Niu Sila.
- › E te lē moomia ona tau fai se kopi o le faamaoniaga na lafo atu i le imeli auā e mafai ona faaaogā le numera ua faailoga ai lau talosaga e siaki ai le tulaga ua oo i ai lau talosaga mo se NZeTA. E fesootai sa'o lau NZeTA i lau tusifolau i luga o le initaneti ma e lua tausaga e aogā ai po o le umi o totoe e aogā ai lau tusifolau.
- › Ia mautinoa o siaki le vaega o lau imeli e ta'ua o le junk mail mo le tuatusi o le imeli na e tusia i lau talosaga na fai mo se NZeTA. O isi faiga e ta'ua o le spam filters e ono poloka ai imeli e lafo atu e le INZ. Siaki le faila i taimi uma auā e mafai ona pasi imeli mai lau inbox i le faila junk mail.

Auala e toe faafou ai faamatalaga o lau NZeTA

Faaaogā le **pepa talosaga lea** e faafou ai faamaumauga o lau tusifolau, sui ai igoa, tuatusi imeli poo ni faasa'oga laiti mo lau NZeTA. O le a moomia ona e tuuina mai le numera o lau NZeTA po o le numera o lau tusifolau.

Afai ua uma le aogā o lau tusifolau pe moomia ona fai ni suiga tetele o lau NZeTA, e tatau ona talosaga sau NZeTA fou.