

## Definitions

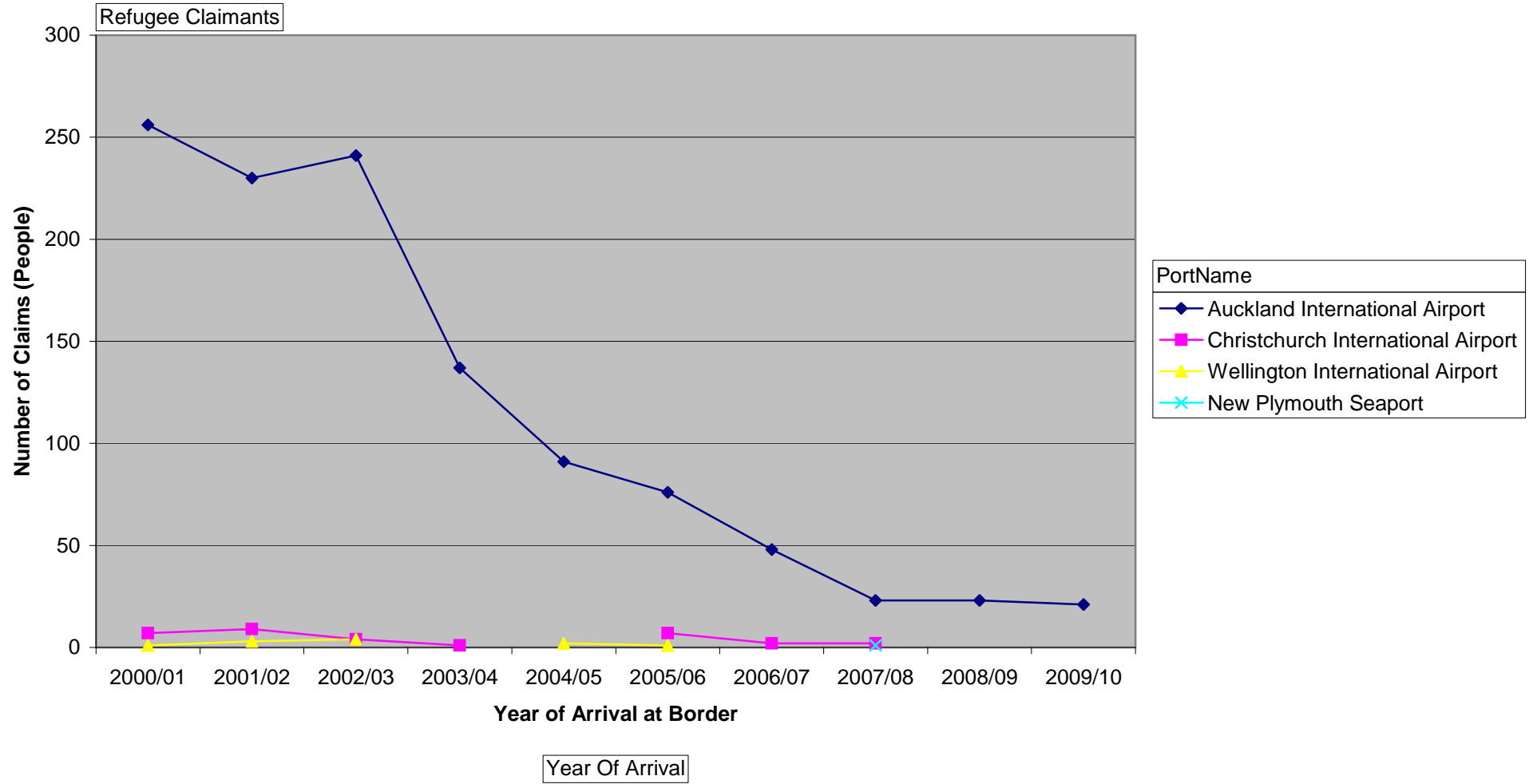
- **Applicants:** Those individuals included in an application. Many applications can have more than one applicant. Individuals who apply for more than one visa or permit in a given year will be counted on each application.
- **Residence Programme:** The number of new migrants to be approved for residence in a given financial year. (This number does not include the following residence applications: replace, confirmation, residence sponsorship or returning residence visas).
- **Stream:** The residence criteria have been divided into three streams. The three streams are: Skilled/Business Stream, Family Sponsored Stream and International/Humanitarian Stream.
- **Financial Year:** All data, unless otherwise stated, is for the financial year (1 July – 30 June).
- **Decided:** Applications which were approved or declined based on policy criteria. This does not include applications which failed lodgements or NZIS refused to consider.
- **Applications Accepted:** Applications which meet the lodgement requirements and have been accepted for consideration.

## About this report:

- This report has been prepared using Excel pivot tables. To get the information you are after, select from the options in the drop down lists at the top of each worksheet.
- Selecting “Principal applicant” will also provide data on the number of applications. Selecting type of applicant = “All” will provide statistics on all applicants in the applications selected.
- “Application category” refers to whether an application is a visa or a permit application.
- “Application criteria” refers to the specific policy name under which an application is processed.
- This report only provides information on those applicants who apply for, are approved or are declined refugee status in the Refugee Status Branch. It does not include appeals to the Refugee Status Appeal Authority.
- Applications decided after 4 May 2009 include advisers as well as agents.

Nationality (All) | MonthOfArrival (All)

### Number of Refugee Border Claims



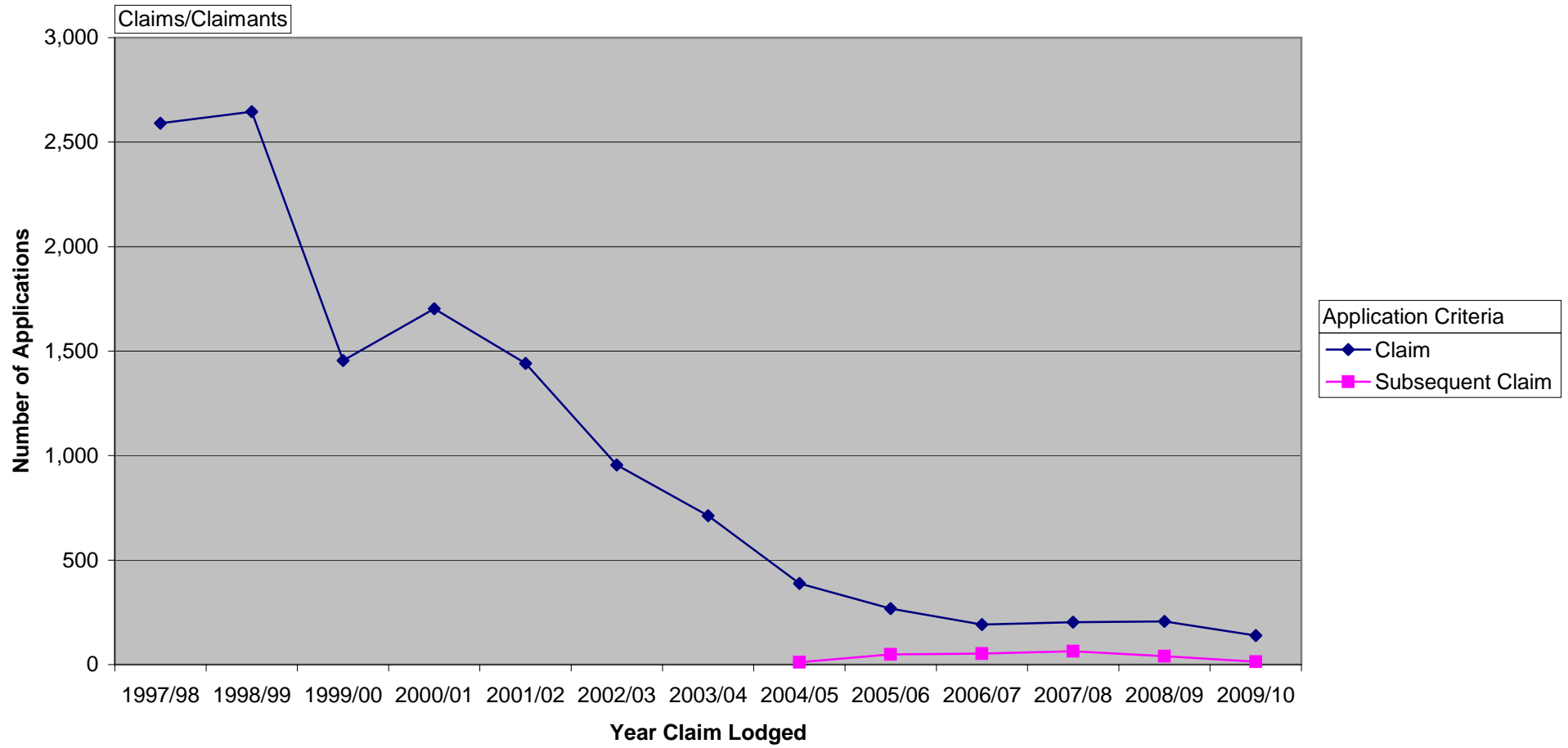
<b>table 1:</b>	<b>Spontaneous refugee claims made at border, by year.</b>
<b>summary:</b>	For each financial year, this table summarises the number of spontaneous refugee claims lodged at New Zealand borders (sea and air ports).
<b>data for period:</b>	01-Jul-1997 to 31-Oct-2009
<b>report prepared by:</b>	Business Information Services, Department Of Labour (Immigration)

Claim	(All)
Nationality	(All)
MonthOfArrival	(All)

Refugee Claimants	PortName				
	Auckland International Airport	Christchurch International Airport	Wellington International Airport	New Plymouth Seaport	Total
Year Of Arrival					
2000/01	256	7	1		264
2001/02	230	9	3		242
2002/03	241	4	4		249
2003/04	137	1			138
2004/05	91		2		93
2005/06	76	7	1		84
2006/07	48	2			50
2007/08	23	2		1	26
2008/09	23				23
2009/10	21				21
Total	1,146	32	11	1	1,190

MonthTendered (All) Applicant Type (All)

### Number of Refugee Claimants Lodged with Refugee Status Branch



FinancialYearTendered

<b>table 2:</b>	<b>Refugee claims tendered by Refugee Status Branch, by financial year.</b>
<b>summary:</b>	This table summarises the number of refugee claims tendered by the Refugee Status Branch.
<b>note:</b>	Claim(s) lodged by each claimant are categorized as either <i>claim</i> (initial) or <i>subsequent claim</i> , with <i>subsequent</i> claims being the second and subsequent claims lodged by a claimant. Distinction between claim and subsequent presented in ApplicationCriteria field.
<b>data for period:</b>	01-Jul-1997 to 31-Oct-2009
<b>report prepared by:</b>	Business Information Services, Department Of Labour (Immigration)

MonthTendered	(All)
Applicant Type	(All)

Claims/Claimants FinancialYearTendered	Application Criteria		Total
	Claim	Subsequent Claim	
1997/98	2,591		2,591
1998/99	2,646		2,646
1999/00	1,455		1,455
2000/01	1,703		1,703
2001/02	1,441		1,441
2002/03	955		955
2003/04	713		713
2004/05	388	11	399
2005/06	268	49	317
2006/07	192	52	244
2007/08	203	64	267
2008/09	206	40	246
2009/10	139	14	153

**Refugee claims tendered by Refugee Status Branch, by claimant nationality and**

table 3:

summary:

tendered by the Refugee Status Branch, categorizing by either *claim* (initial) or *subsequent claim*, with *subsequent* claims being the second and subsequent

note:

data for period:

01-Jul-1997 to 31-Oct-2009

report prepared by:

Business Information Services, Department Of Labour (Immigration)

Application Criteria	(All)
Applicant Type	(All)
Gender	(All)
AgeRange	(All)
MonthTendered	(All)

Claims/Claimants	FinancialYearTendere													Total
	1997/98	1998/99	1999/00	2000/01	2001/02	2002/03	2003/04	2004/05	2005/06	2006/07	2007/08	2008/09	2009/10	
Afghanistan	61	165	21	34	137	2	4	1		1	4	2		432
Albania	4		1	9	3	3	7					2		29
Algeria	17	10	7	16	14	8	1	1	1		2	4		81
Angola		1		1								1		3
Argentina				1	10	1								12
Armenia				1										1
Australia							1				1			2
Austria			4											4
Azerbaijan		1			1									2
Bahrain	2		4	2					1					9
Bangladesh	27	15	22	24	26	19	36	16	23	17	9	10	2	246
Belarus							1					1	1	3
Belgium	2				2									4
Bolivia	10	6	5	8	2				2		4		1	38
Bosnia & Herzegovina	2	4	2											8
Brazil	1		1		2	1	10	8			1	1	2	27
Bulgaria	15	16	5	7	2	3		9						57
Burundi		2	1				2							5
Cambodia	10	10	33	9	2	3	1			1				69
Cameroon				1							1	1		3
Canada	2		1					1						4

Chad	1								1	4	3	1		10
Chile	4	1	6	27	17	20	19	23	4			3		124
China	454	252	72	54	46	37	62	30	18	38	16	22	8	1,109
Colombia	2	5	23	14	7	6	1		3	1	1	1	3	67
Congo	2	1	5	7	6	1	2				1	1		26
Croatia		4	1	2										7
Cuba				1	1				1	1				4
Czech Republic	2	72	124	123	6	8	22	23	20	9	6	14	6	435
Democratic Republic of Congo	3	4	2	5	9	2	2	3	1		1	4		36
Denmark		1												1
Djibouti	1													1
Dominica	2													2
Ecuador		1	3		1	3								8
Egypt	11	6	7	3	2		3	1	6		4	2	5	50
El Salvador								3						3
Eritrea			2			3	1	1	2	1		2		12
Ethiopia	26	18		7	3	4	4	7	3		4	3		79
Faeroe Islands		1												1
Fiji	187	80	24	51	42	12	15	11	9	7	8	23	19	488
France			2				1							3
Georgia	1						2		2					5
Germany	1													1
Ghana	6	8	3	2	1	1						2		23
Great Britain	4	2		2	1	1	2			1	3			16
Greece	1													1
Guinea				1										1
Hong Kong	20	3	4		2		1							30
Hungary					18	80	21	2	8	7	4			140
Iceland	1													1
India	211	172	142	68	88	78	94	30	20	12	4	12	24	955
Indonesia	139	658	38	18	8	5	1		1		1			869
Iran	159	102	110	132	111	133	106	66	31	32	22	28	11	1,043
Iraq	49	21	31	46	49	43	16	16	28	28	46	16	15	404
Ireland				1	2									3
Israel	3	6	2			9	9		4	5		2		40
Italy	1					1								2
Ivory Coast	1													1
Japan	10	5	2	2										19
Jordan		5		13	4	1	3	13	3		1			43
Kazakhstan	27						1							28
Kenya				1							2			3
Kiribati			6	6			1						1	14
Kuwait	1	3	42	25	9	7	1	1	1				2	92
Kyrgyzstan						1	1	1	4				1	8
Laos		3	1	1	6		1	1						13

Latvia		5	2	1	2	2			1					13
Lebanon		2	7	3	5	2	3				1			23
Liberia	18	2	1	2	1	7								24
Libya	1	3	2		1	7								14
Lithuania		4	2	6										12
Macedonia	5	5	6	5	4									25
Madagascar			3										4	7
Malaysia	8	86	69	56	29	33	27	12		2	11	7	1	341
Mali	1			1				3						5
Moldova			1		3				1					5
Mongolia			5			1	3							9
Morocco	10	3	7		2	4								26
Mozambique	2													2
Myanmar	4	4	3	7	6	5	9	11	1	6	8	1		65
Namibia		3												3
Nauru				10				2						12
Nepal	10	9	1	7	11	4	6	15	10	2	3	3		81
New Zealand	70	30	17	13	1	1	1	1						134
Nigeria	23	13	9	12	17	11	6	3	6	1	1	1	1	104
North Korea	2						1					2		5
Oman			1			1								2
Pakistan	34	31	30	19	29	13	9	6	9	7	9	6	12	214
Palestine			1	5	5		1	2		3			4	21
Papua New Guinea			1			1					1			3
Peru	12	2	3	2	1	3		6		1				30
Philippines	8	19	17	6	2		2	2		1		1		58
Poland	4	4		3			2	1		2	8	1		25
Portugal	2	1												3
Romania		1	1	9	3	1		1	11			1		28
Russia	42	16	16		4	5	2	4	3	2	2	2		98
Rwanda	3	1			2	2	1							9
Samoa	2	1												3
Saudi Arabia					2	5	10			4	4	4		29
Serbia & Montenegro									1					1
Sierra Leone	13	12	3	9	5	1			2	1	2			48
Singapore		4		4				1				1		10
Slovakia		2	4	5				2		10	1	5	1	42
Slovenia		1												1
Solomon Islands				8		3	1							12
Somalia	90	20	16	9	16	24	12	10	15	4	4	4		224
South Africa	22	22	14	10	12	10	16	1	5	1	2	7	2	124
South Korea	304	45	2		1		2	1			1			356
Soviet Union	2							1						3
Sri Lanka	127	157	120	119	71	27	27	13	17	20	36	23	10	767
Stateless	2		4	2	6	1	1							16

Sudan	6	4	2	4	4	3	5	3	2	2		1	1	37
Switzerland				2										2
Syria	5	6	3	2	5	8	7	10	10	2	1	10		69
Taiwan	9	6				2								17
Tajikistan		1		1										2
Tanzania			1	3	1									5
Thailand	34	251	202	460	457	158	67	6			1			1,636
Togo	2	1				2			2					7
Tonga	9	3	22	23	1									58
Tunisia	1	5	4					1						11
Turkey	19	3	3	14	4		1	2	2	5	2	2		57
Tuvalu			39	25										64
Uganda			1	1			2			1	1			6
Ukraine	39	24	4		2		3	1		1	1			75
United Arab Emirates					1		1							2
United States of America		1				4				2				7
Unknown	50	31	2				1					1		85
Uruguay			1					1						2
Uzbekistan	1				1									2
Vanuatu	1													1
Venezuela	1		1											2
Vietnam	107	113	23	15	4	4	7	7	2		1	1		284
Yemen	1		1	1	1									4
Yugoslavia	2	25	5	6	3		1							42
Zambia				2										2
Zimbabwe			14	86	76	111	17	6	10	7	9	5	5	346
Macau												1		1
Mexico											3	1		4
Estonia											2			2
Guinea - Bissau												1		1
Total	2,591	2,646	1,455	1,703	1,441	955	713	399	317	244	267	246	153	13,130

Month Decided (All) Gender (All) AgeRange (All) Nationality (All) Applicant Type (All)

### Number of Refugee Status Claims Decided

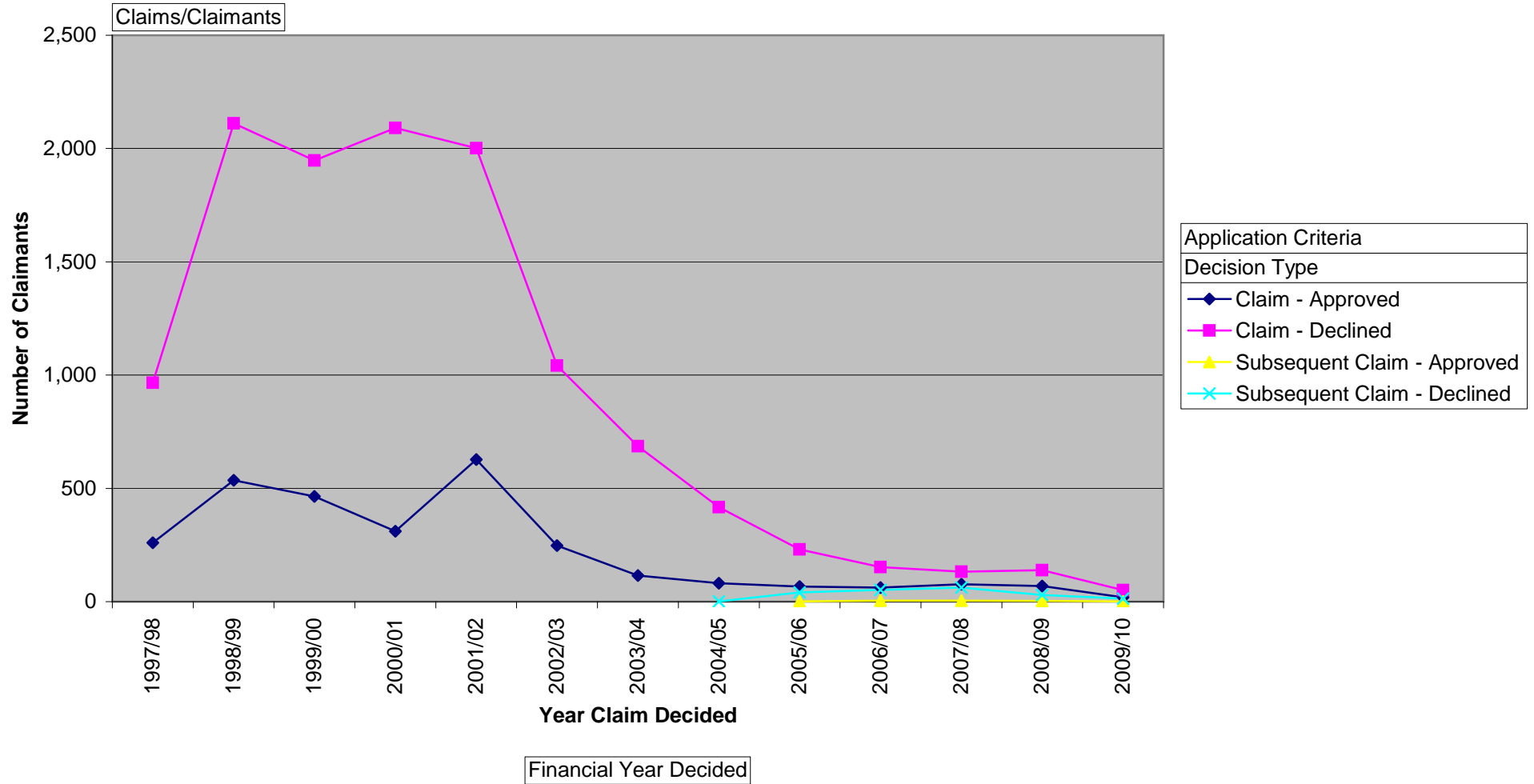




table 5:

## Refugee claims decided by Refugee Status Branch, by claimant nationality and financial year of decision.

summary:

This table summarises the number of refugee claims decided by the Refugee Status Branch, categorizing by claimant nationality and financial year of decision.

note:

Claim(s) lodged by each claimant are categorized as either *claim* (initial) or *subsequent claim*, with *subsequent* claims being the second and subsequent claims lodged by a claimant. Distinction between *claim* and *subsequent* presented in ApplicationCriteria field.

data for period:

01-Jul-1997 to 31-Oct-2009

report prepared by:

Business Information Services, Department Of Labour (Immigration)

Application Criteria	(All)
Decision Type	(All)
Gender	(All)
AgeRange	(All)
Month Decided	(All)
Applicant Type	(All)

Claims/Claimants	Financial Year Decided													Total
	1997/98	1998/99	1999/00	2000/01	2001/02	2002/03	2003/04	2004/05	2005/06	2006/07	2007/08	2008/09	2009/10	
Afghanistan	14	97	118	9	181	7	4	1			3	4		438
Albania	1	1	2	3	14	1	9					2		33
Algeria	4	15	11	8	30	12	6	1		1	2	1	3	94
Angola			1		1							1		3
Argentina	1				1	11								13
Armenia					1									1
Australia											1			1
Austria				4										4
Azerbaijan			1			2								3
Bahrain		2	3	2	1				1					9
Bangladesh	14	12	35	32	46	35	35	21	25	15	13	8	1	292
Belarus							1						1	2
Belgium	1			1	1	1								4
Bolivia	7		3	17	4				1	1	3	1		37
Bosnia & Herzegovina	2	4	1	1	2									10
Brazil	2		1	1		3	9	4	6		1		3	30
Brunei Darussalam	1													1
Bulgaria	6	22	13	8	17	4		4	5					79
Burundi	1	1	3	3			1	1						10
Cambodia		9	8	41	6	2	3				1			70
Cameroon		2				1						2		5
Canada		2	1						1					4
Chad		1								5	3	1		10
Chile				9	37	26	20	25	2	3		3		125

China	180	536	520	329	180	41	55	41	17	36	26	21	5	1,987
Colombia		3	4	8	26	9	8		2	1	1	2		64
Congo		2		8	7	5	1	1			1	1		26
Costa Rica		1												1
Croatia			4		2	1								7
Cuba						2			1	1				4
Czech Republic		40	14	105	155	19	12	23	29	10	6	10	4	427
Democratic Republic of Congo	2	1	2		13	8	2	3	1		1	4		37
Denmark					1									1
Djibouti	1													1
Dominica					2									2
Ecuador					4		1							5
Egypt		13	3	1	7	5	4	1	6		2	4		46
El Salvador									3					3
Eritrea				1	1		4	1	1	2		2		12
Ethiopia	20	20	5	2	9	8	6	3	7		4		3	87
Faeroe Islands			1											1
Fiji	211	59	55	59	44	26	19	3	16	5	11	17	9	534
France			2				1							3
Gabon			1											1
Georgia			1					2	2					5
Germany		1												1
Ghana	7	7	6	7	4	1						2		34
Great Britain	5	3	1	4		1	2				4			20
Greece		1												1
Guinea						1								1
Hong Kong	13	15	21	3	1	1		1						55
Hungary					4	81	28	8		9	10			140
Iceland	1													1
India	153	158	147	177	246	106	86	68	14	16	7	14	16	1,208
Indonesia	28	218	479	127	17	9	1		1		1			881
Iran	107	176	123	106	233	145	114	97	36	32	23	26	7	1,225
Iraq	23	23	30	28	88	39	35	16	29	26	41	24	3	405
Ireland					2	1								3
Israel	3	3	1		6	6	6	6	3	6		2		42
Italy		1					1							2
Ivory Coast				1										1
Japan	8	4	4	1	2									19
Jordan		3		1	11	6	5	13	3		1			43
Kazakhstan	11	16	4		1			1						33
Kenya				1							1	1		3
Kiribati				12			1							13
Kuwait	1		14	16	34	11	3	1		1				81
Kyrgyzstan						1		2		4				7
Laos			3	1	5	1	1	1						12
Latvia		4	1		3	3	1			1				13

Lebanon	1	1	2	5	6	3	4					1		23
Liberia	4	16	8	7	5	1								41
Libya			6		1	1	6							14
Lithuania				2	6	4								12
Macedonia		4	6	9	2	4								25
Madagascar					3									3
Malaysia	24	11	120	72	36	29	25	14	7		11	9	1	359
Mali		1			1				3					5
Moldova					3	1				1				5
Mongolia				4	1		1	3						9
Morocco	8	10	9	8	7	1	3							46
Mozambique	2			1	1									4
Myanmar	15	2	4	9	4	9	6	12	7	5	6	4		83
Namibia				3										3
Nauru				10					2					12
Nepal	1	2	9	5	21	14	9	3	19	5	1	5		94
New Zealand	24	63	45	24	11	3								170
Nigeria	13	22	7	17	25	15	10	1	7	1	2		1	121
North Korea		1			1			1					2	5
Oman					1		1							2
Pakistan	10	15	29	27	70	32	5	11	5	13	9	2	3	231
Palestine				1	7	3		3		2	1			17
Papua New Guinea					1	1						1		3
Peru	4	10	3	1	6	4	3	6		1				38
Philippines		5	14	28	8	2	1	2		1		1		62
Poland	1	4	1	5	1		2		1	2	8	1		26
Portugal		1	2											3
Romania		1	2		9	3	1	1	9	2		1		29
Russia	34	43	50	15	10	7	1	5	2	3	2		2	174
Rwanda	3	3			2	3		1						12
Samoa	1	2												3
Saudi Arabia					1	5	11			4	2	3	3	29
Serbia & Montenegro										1				1
Sierra Leone	7	10	6	5	14	4			2		3			51
Singapore	2	2	3	4	1			1				1		14
Slovakia				6	5		2		9	1	4	3		30
Slovenia				1										1
Solomon Islands				6	2	3	1							12
Somalia	31	106	36	8	18	22	13	12	8	8	4	6		272
South Africa	5	7	17	10	39	13	18	2	3	3	2	6	2	127
South Korea	80	299	3	2			3	1			1			389
Soviet Union	4	2	2						1					9
Spain	1													1
Sri Lanka	73	117	165	110	200	72	21	22	12	26	34	19	8	879
Stateless		2		5	1	6	2							16
Sudan		4	7	4	10	4	2	7	1	2	1		2	44



**table 6: Refugee claims decided by Refugee Status Branch, by claimant age group and financial year of decision.**

**summary:** This table summarises the number of refugee claims decided by the Refugee Status Branch, categorizing by claimant age group and financial year of decision.

**note:** Claim(s) lodged by each claimant are categorized as either *claim* (initial) or *subsequent claim*, with *subsequent* claims being the second and subsequent claims lodged by a claimant. Distinction between *claim* and *subsequent* presented in ApplicationCriteria field.

**data for period:** 01-Jul-1997 to 31-Oct-2009

**report prepared by:** Business Information Services, Department Of Labour (Immigration)

Application Criteria	(All)
Decision Type	(All)
Gender	(All)
Nationality	(All)
Month Decided	(All)
Applicant Type	(All)

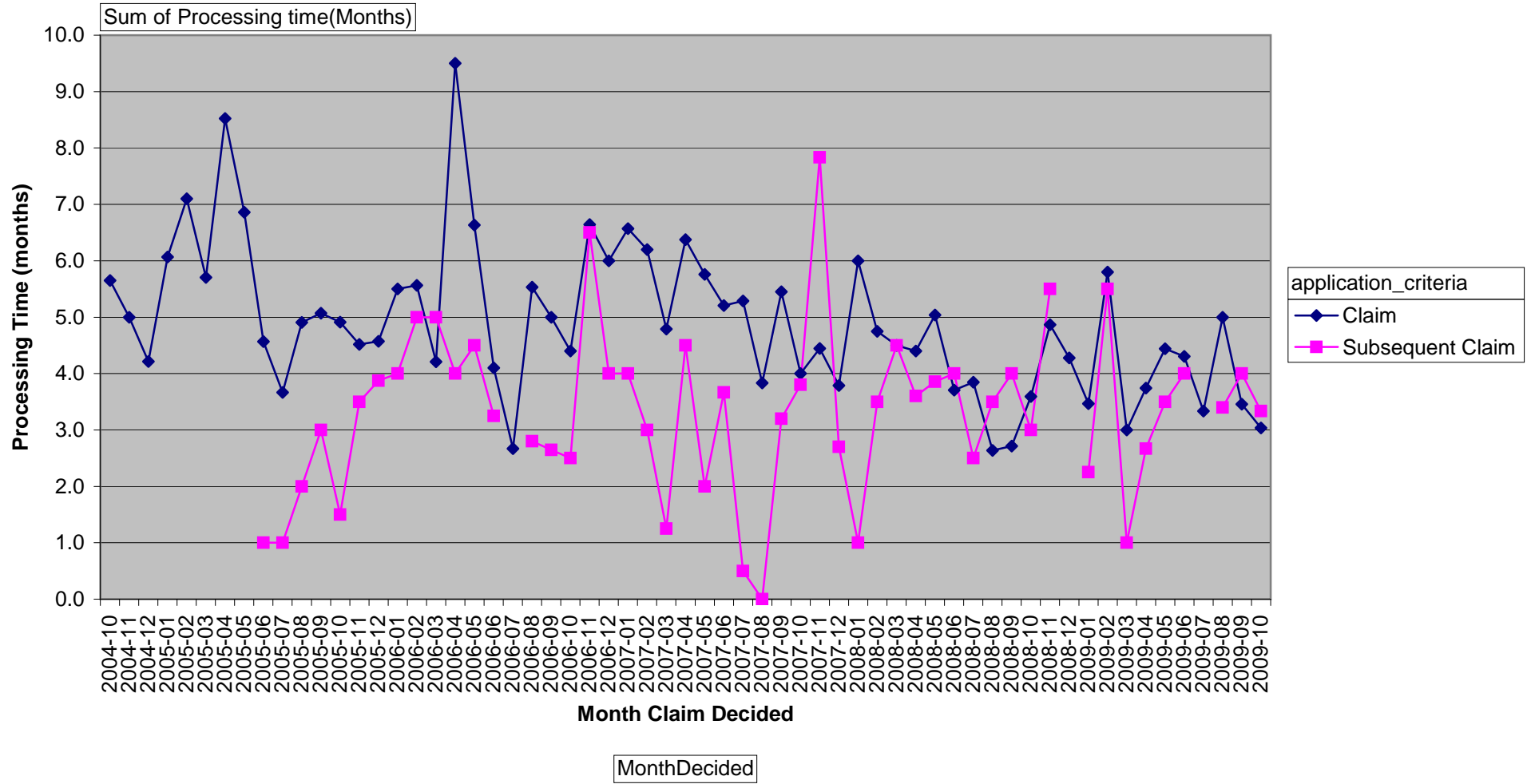
Claims/Claimants	AgeRange							Total
Financial Year Decided	20-29 Years	30-39 Years	40-49 Years	50-59 Years	60-64 Years	65+ Years	0-19 Years	Total
1997/98	336	384	174	34	10	12	276	1,226
1998/99	702	766	351	79	28	32	689	2,647
1999/00	666	826	394	99	30	52	344	2,411
2000/01	700	870	436	108	19	43	226	2,402
2001/02	664	925	412	122	26	34	446	2,629
2002/03	415	434	198	50	9	15	168	1,289
2003/04	289	260	99	41	8	8	96	801
2004/05	159	163	71	29	1	2	74	499
2005/06	96	108	43	19	2	6	66	340
2006/07	68	83	43	20	2	5	50	271
2007/08	59	78	44	20	5	16	53	275
2008/09	60	75	40	17	1	4	43	240
2009/10	21	28	17	3	1	1	13	84
<b>Total</b>	<b>4,235</b>	<b>5,000</b>	<b>2,322</b>	<b>641</b>	<b>142</b>	<b>230</b>	<b>2,544</b>	<b>15,114</b>

<b>table 7:</b>	<b>Approve and decline rates for Refugee Status claims decided by Refugee Status Branch.</b>
<b>note:</b>	Claim(s) lodged by each claimant are categorized as either <i>claim</i> (initial) or <i>subsequent claim</i> , with <i>subsequent</i> claims being the second and subsequent claims lodged by a claimant. Distinction between <i>claim</i> and <i>subsequent</i> presented in ApplicationCriteria field.
<b>data for period:</b>	01-Jul-1997 to 31-Oct-2009
<b>report prepared by:</b>	Business Information Services, Department Of Labour (Immigration)

Application Criteria	(All)
Applicant Type	(All)
Nationality	(All)

Claims/Claimants	Decision Type					
	Approved	Declined	Total Decided	Approved (%)	Declined (%)	
Financial Year Decided						
1997/98	260	966	1,226	21	79	
1998/99	536	2,111	2,647	20	80	
1999/00	464	1,947	2,411	19	81	
2000/01	311	2,091	2,402	13	87	
2001/02	627	2,002	2,629	24	76	
2002/03	247	1,042	1,289	19	81	
2003/04	115	686	801	14	86	
2004/05	81	418	499	16	84	
2005/06	68	272	340	20	80	
2006/07	66	205	271	24	76	
2007/08	81	194	275	29	71	
2008/09	72	168	240	30	70	
2009/10	20	64	84	24	76	

## Refugee Status Claims Processing Time



**table 8: Processing times for Refugee Status claims decided.**

Claim(s) lodged by each claimant are categorized as either *claim* (initial) or *subsequent claim*, with *subsequent* claims being the second and subsequent claims lodged by a claimant. Distinction between *claim* and *subsequent* presented in ApplicationCriteria field.

**note:**

**data for period:** 01-Jul-1997 to 31-Oct-2009

**report prepared by:** Business Information Services, Department Of Labour (Immigration)

Sum of Processing tim MonthDecided	application_criteria	
	Claim	Subsequent Claim
2006-07	2.7	
2006-08	5.5	2.8
2006-09	5.0	2.6
2006-10	4.4	2.5
2006-11	6.6	6.5
2006-12	6.0	4.0
2007-01	6.6	4.0
2007-02	6.2	3.0
2007-03	4.8	1.3
2007-04	6.4	4.5
2007-05	5.8	2.0
2007-06	5.2	3.7
2007-07	5.3	0.5
2007-08	3.8	0.0
2007-09	5.4	3.2
2007-10	4.0	3.8
2007-11	4.4	7.8
2007-12	3.8	2.7
2008-01	6.0	1.0
2008-02	4.8	3.5
2008-03	4.5	4.5
2008-04	4.4	3.6
2008-05	5.0	3.9
2008-06	3.7	4.0
2008-07	3.8	2.5
2008-08	2.6	3.5
2008-09	2.7	4.0
2008-10	3.6	3.0
2008-11	4.9	5.5
2008-12	4.3	
2009-01	3.5	2.3
2009-02	5.8	5.5
2009-03	3.0	1.0
2009-04	3.7	2.7
2009-05	4.4	3.5
2009-06	4.3	4.0
2009-07	3.3	
2009-08	5.0	3.4
2009-09	3.5	4.0
2009-10	3.0	3.3

**Refugee Status claims on hand with Refugee Status Branch, by claimant nationality.**

table 9:

notes:

(i) Claim(s) lodged by each claimant are categorized as either *claim* (initial) or *subsequent claim*, with *subsequent* claims being the second and subsequent claims lodged by a claimant. Distinction between *claim* and *subsequent* presented in ApplicationCriteria field.

(ii) This report regards a claim as *on hand* if the claim has been tendered to the Refugee Status Branch and the branch is yet to decide the claim. The number of claims on hand are presented here as at the start of the month selected in the Month field.

data for period: 01-Jul-1997 to 31-Oct-2009

report prepared by: Business Information Services, Department Of Labour (Immigration)

Application_Criteria	(All)
Month	2007-09

Sum of Application/Clients Nationality	Months_Onhand					Total
	Less than 3 months	4-6 months	7-9 months	10-12 months	Over 12 months	
Afghanistan		1	1			2
Algeria	2					2
Bangladesh			1			1
Bolivia	1					1
Brazil	1					1
Cambodia				1		1
Chad	1					1
China	5			2	1	8
Egypt	1					1
Fiji	1		2			3
India	2		2			4
Iran	10			1		11
Iraq	11		1			12
Malaysia	4		1			5
Nigeria			1			1
Pakistan	6					6
Palestine	1					1

Russia	1					1
Saudi Arabia	1					1
Sierra Leone	3					3
Somalia	2					2
South Africa	1					1
South Korea	1					1
Sri Lanka	14			1		15
Sudan		1				1
Syria	1					1
Turkey	1					1
Uganda		1				1
United States of America		1				1
Vietnam	1					1
Zimbabwe	1					1
Total	74	12	4	1	1	92