

# *Refugee Status Applications Accepted And Decided*

13:58 Wednesday, February 8, 2012 1

*Report prepared by Business Information Services, Department of Labour (Immigration)  
Definitions*

<b>Term</b>	<b>Definition</b>
Applicants	Those individuals included in an application. Many applications can have more than one applicant. Individuals who apply for more than one visa or permit in a given year will be counted on each application.
Applications Accepted	Applications which meet the lodgement requirements and have been accepted for consideration.
Applications Decided	Applications which are approved or declined, based on policy criteria. Does not include applications which do not meet the lodgement requirements, were withdrawn or NZIS refuses to consider.
Financial Year	All data, unless otherwise stated, is for the financial year (1 July – 30 June).
Residence Programme	The number of new migrants to be approved for residence in a given financial year. (This number does not include the following residence applications: replace, confirmation, residence sponsorship or returning residence visas).
Stream	The residence criteria have been divided into three streams. The three streams are: Skilled/Business Stream, Family Sponsored Stream and International/Humanitarian Stream.

## **About this report**

"Application category" refers to whether an application is a visa or a permit application.

"Application criteria" refers to the specific policy name under which an application is processed.

This report only provides information on those applicants who apply for, are approved or are declined refugee status in the Refugee Status Branch. It does not include appeals to the Refugee Status Appeal Authority.

Applications decided after 4 May 2009 include advisers as well as agents.

# Spontaneous refugee claims made at border, by year.

13:58 Wednesday, February 8, 2012 2

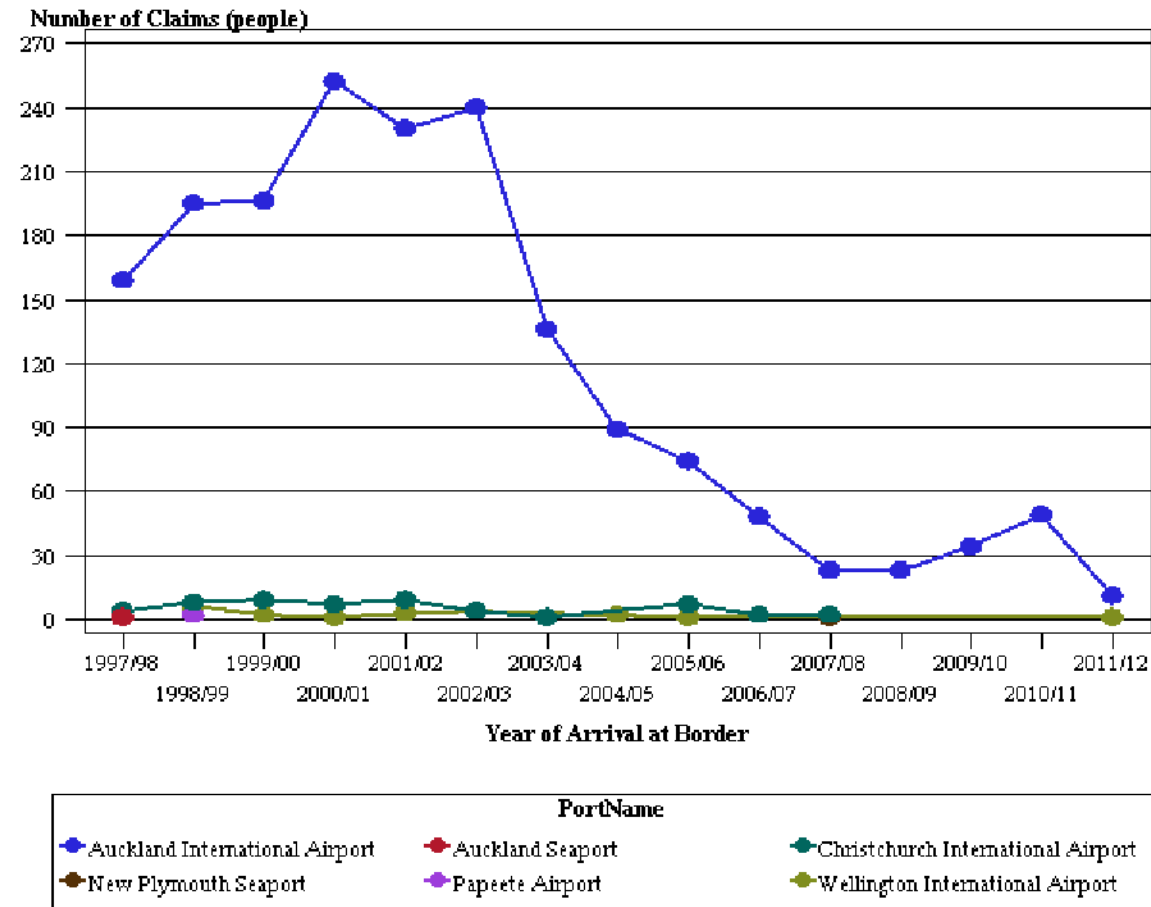
*Summary: For each financial year, this table summarises the number of spontaneous refugee claims lodged at New Zealand borders (sea and air ports).*

*July 01, 1997 to February 05, 2012*

## RefugeeClaimants

	PortName						Total
	Auckland International Airport	Auckland Seaport	Christchurch International Airport	New Plymouth Seaport	Papeete Airport	Wellington International Airport	
YearOfArrival							
1997/98	159	1	4	.	.	.	164
1998/99	195	.	8	.	2	6	211
1999/00	196	.	9	.	.	2	207
2000/01	252	.	7	.	.	1	260
2001/02	230	.	9	.	.	3	242
2002/03	240	.	4	.	.	4	248
2003/04	136	.	1	.	.	.	137
2004/05	89	.	.	.	.	2	91
2005/06	74	.	7	.	.	1	82
2006/07	48	.	2	.	.	.	50
2007/08	23	.	2	1	.	.	26
2008/09	23	.	.	.	.	.	23
2009/10	34	.	.	.	.	.	34
2010/11	49	.	.	.	.	.	49
2011/12	11	.	.	.	.	1	12
Total	1,759	1	53	1	2	20	1,836

# Number of Refugee Border Claims



# *Refugee claims tendered by Refugee Status Branch, by financial year.*

*Summary: This table summarises the number of refugee claims tendered by the Refugee Status Branch.*

*Note: Claim(s) lodged by each claimant are categorised as either claim (initial) or subsequent claim, with subsequent claims being the second and subsequent claims lodged by a claimant.*

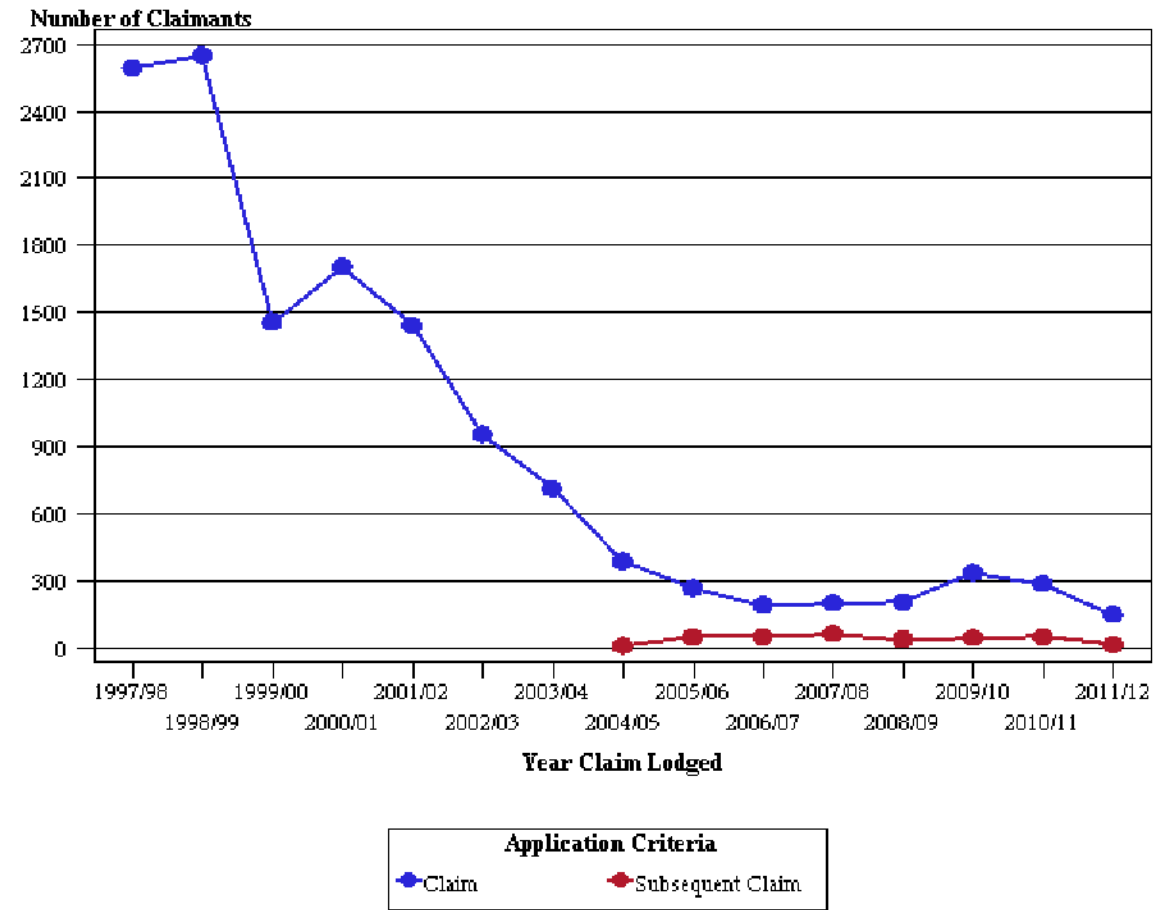
*Distinction between claim and subsequent presented in Application Criteria field.*

*July 01, 1997 to February 05, 2012*

## RefugeeClaimants

	\$AMSC_GROUNDS_CRITERIA.		Total
	Claim	Subsequent Claim	
FinancialYearTendered			
1997/98	2,591	.	2,591
1998/99	2,646	.	2,646
1999/00	1,456	.	1,456
2000/01	1,703	.	1,703
2001/02	1,441	.	1,441
2002/03	955	.	955
2003/04	713	.	713
2004/05	388	11	399
2005/06	268	49	317
2006/07	192	52	244
2007/08	203	64	267
2008/09	206	40	246
2009/10	336	48	384
2010/11	287	50	337
2011/12	150	17	167
<b>Total</b>	<b>13,535</b>	<b>331</b>	<b>13,866</b>

# *Number of Refugee Claimants Lodged with Refugee Status Branch*



# Refugee claims tendered by Refugee Status Branch, by claimant nationality and financial year.

Summary: This table summarises the number of refugee claims tendered by the Refugee Status Branch, categorizing by claimant nationality and financial year.

Note: Claim(s) lodged by each claimant are categorised as either claim (initial) or subsequent claim, with subsequent claims being the second and subsequent claims lodged by a claimant.

Distinction between claim and subsequent presented in Application Criteria field.

July 01, 1997 to February 05, 2012

## RefugeeClaimants

nationality	FinancialYearTendered															Total
	1997/98	1998/99	1999/00	2000/01	2001/02	2002/03	2003/04	2004/05	2005/06	2006/07	2007/08	2008/09	2009/10	2010/11	2011/12	
(not recorded)	127	67	23	15	6	4	3	5	.	1	.	1	1	.	.	253
Afghanistan	60	163	21	34	135	2	4	1	.	1	4	2	2	13	2	444
Albania	4	.	1	9	3	3	7	.	.	.	.	2	.	.	.	29
Algeria	17	10	7	16	14	8	1	1	1	.	2	4	1	.	.	82
Angola	.	1	.	1	.	.	.	.	.	.	.	1	.	.	.	3
Argentina	.	.	.	1	10	1	.	.	.	.	.	.	.	.	.	12
Armenia	.	.	.	1	.	.	.	.	.	.	.	.	.	.	.	1
Austria	.	.	4	.	.	.	.	.	.	.	.	.	.	.	.	4
Azerbaijan	.	1	.	.	1	.	.	.	.	.	.	.	.	.	.	2
Bahrain	2	.	4	2	.	.	.	.	1	.	.	.	.	16	7	32
Bangladesh	27	15	22	24	26	19	36	16	23	17	9	10	7	4	7	262
Belarus	.	.	.	.	.	.	1	.	.	.	.	1	1	.	.	3
Belgium	2	.	.	.	2	.	.	.	.	.	.	.	.	.	.	4
Bolivia	10	6	5	8	2	.	.	.	2	.	4	.	1	.	.	38
Bosnia & Herzegovina	2	4	2	.	.	.	.	.	.	.	.	.	.	.	.	8
Brazil	1	.	1	.	2	1	10	8	.	.	1	1	7	3	.	35
Bulgaria	15	16	4	7	2	3	.	9	.	.	.	.	1	.	1	58
Burundi	.	2	1	.	.	.	2	.	.	.	.	.	.	.	.	5
Cambodia	10	10	33	9	2	3	1	.	.	1	.	.	.	.	.	69
Cameroon	.	.	.	1	.	.	.	.	.	.	1	1	1	1	1	6
Canada	2	.	1	.	.	.	.	1	.	.	.	.	.	.	1	5
Chad	1	.	.	.	.	.	.	.	1	4	3	1	.	2	.	12
Chile	4	1	6	27	17	20	19	23	4	.	.	3	.	2	1	127
China	454	253	72	54	45	37	61	29	18	38	16	22	25	22	12	1,158

(Continued)

# Refugee claims tendered by Refugee Status Branch, by claimant nationality and financial year.

Summary: This table summarises the number of refugee claims tendered by the Refugee Status Branch, categorizing by claimant nationality and financial year.

Note: Claim(s) lodged by each claimant are categorised as either claim (initial) or subsequent claim, with subsequent claims being the second and subsequent claims lodged by a claimant.

Distinction between claim and subsequent presented in Application Criteria field.

July 01, 1997 to February 05, 2012

## RefugeeClaimants

nationality	FinancialYearTendered															Total
	1997/98	1998/99	1999/00	2000/01	2001/02	2002/03	2003/04	2004/05	2005/06	2006/07	2007/08	2008/09	2009/10	2010/11	2011/12	
Colombia	2	5	23	14	7	6	1	.	3	1	1	1	7	1	3	75
Congo	2	1	5	7	6	.	2	.	.	.	1	1	.	.	.	25
Croatia	.	4	1	2	.	.	.	.	.	.	.	.	.	.	.	7
Cuba	.	.	.	1	1	.	.	.	1	1	.	.	.	.	.	4
Czech Republic	2	72	124	123	6	8	22	23	19	9	6	14	22	9	5	464
Democratic Republic of Congo	3	4	2	5	9	3	2	3	1	.	1	4	.	2	1	40
Denmark	.	1	.	.	.	.	.	.	.	.	.	.	.	.	.	1
Djibouti	1	.	.	.	.	.	.	.	.	.	.	.	.	.	.	1
Dominica	2	.	.	.	.	.	.	.	.	.	.	.	.	.	.	2
Ecuador	.	1	3	.	1	3	.	.	.	.	.	.	.	.	.	8
Egypt	11	6	7	3	2	.	3	1	6	.	4	2	9	10	12	76
El Salvador	.	.	.	.	.	.	.	3	.	.	.	.	.	.	4	7
Eritrea	.	.	2	.	.	3	1	1	2	1	.	2	.	1	.	13
Estonia	.	.	.	.	.	.	.	.	.	.	2	.	.	.	.	2
Ethiopia	27	18	.	7	3	4	4	7	3	.	4	3	2	3	.	85
Faeroe Islands	.	1	.	.	.	.	.	.	.	.	.	.	.	.	.	1
Fiji	186	80	23	50	42	12	15	11	9	7	8	23	57	51	18	592
France	.	.	2	.	.	.	1	.	.	.	.	.	.	.	.	3
Georgia	1	.	.	.	.	.	2	.	2	.	.	.	.	1	.	6
Germany	1	.	.	.	.	.	.	.	.	.	.	.	.	7	.	8
Ghana	6	8	3	2	1	1	.	.	.	.	.	2	3	4	.	30
Great Britain	4	1	.	2	1	1	2	.	.	1	3	.	.	.	.	15
Greece	1	.	.	.	.	.	.	.	.	.	.	.	.	.	.	1
Guinea	.	.	.	1	.	.	.	.	.	.	.	.	.	.	.	1

(Continued)

# Refugee claims tendered by Refugee Status Branch, by claimant nationality and financial year.

Summary: This table summarises the number of refugee claims tendered by the Refugee Status Branch, categorizing by claimant nationality and financial year.

Note: Claim(s) lodged by each claimant are categorised as either claim (initial) or subsequent claim, with subsequent claims being the second and subsequent claims lodged by a claimant.

Distinction between claim and subsequent presented in Application Criteria field.

July 01, 1997 to February 05, 2012

## RefugeeClaimants

	FinancialYearTendered															Total
	1997/98	1998/99	1999/00	2000/01	2001/02	2002/03	2003/04	2004/05	2005/06	2006/07	2007/08	2008/09	2009/10	2010/11	2011/12	
nationality																
Guinea - Bissau	.	.	.	.	.	.	.	.	.	.	.	1	.	.	.	1
Hong Kong	20	4	4	.	2	.	1	.	.	.	.	.	.	1	.	32
Hungary	.	.	.	.	18	80	21	2	8	7	4	.	1	4	7	152
Iceland	1	.	.	.	.	.	.	.	.	.	.	.	.	.	.	1
India	211	172	142	68	88	78	94	30	20	12	4	12	24	.	2	957
Indonesia	139	655	38	18	8	5	1	.	1	.	1	.	1	4	.	871
Iran	157	101	110	131	110	133	106	65	31	32	22	28	30	44	12	1,112
Iraq	49	21	31	46	49	42	16	16	28	28	46	16	24	12	6	430
Ireland	.	.	.	1	2	.	.	.	.	.	.	.	.	.	.	3
Israel	3	6	2	.	.	8	9	.	4	5	.	2	1	2	.	42
Italy	1	.	.	.	.	1	.	.	.	.	.	.	.	.	.	2
Ivory Coast	1	.	.	.	.	.	.	.	.	.	.	.	.	.	.	1
Japan	10	5	2	2	.	.	.	.	.	.	.	.	.	1	1	21
Jordan	.	5	.	13	4	1	3	13	3	.	1	.	1	2	1	47
Kazakhstan	26	.	.	.	.	.	1	.	.	.	.	.	.	1	.	28
Kenya	.	.	.	1	.	.	.	.	.	.	2	.	.	.	.	3
Kiribati	.	.	6	6	.	.	1	.	.	.	.	.	1	2	.	16
Kosovo - Republic of	.	1	.	.	.	.	.	.	.	.	.	.	.	.	.	1
Kuwait	1	3	42	25	9	7	1	1	1	.	.	.	2	2	.	94
Kyrgyzstan	.	.	.	.	.	2	1	1	4	.	.	.	1	.	.	9
Laos	.	3	1	1	6	.	1	1	.	.	.	.	.	.	.	13
Latvia	.	5	2	1	2	2	.	.	1	.	.	.	.	.	.	13
Lebanon	.	2	7	3	5	2	3	.	.	.	1	.	2	1	1	27
Liberia	18	2	1	2	1	.	.	.	.	.	.	.	.	.	.	24

(Continued)

# Refugee claims tendered by Refugee Status Branch, by claimant nationality and financial year.

Summary: This table summarises the number of refugee claims tendered by the Refugee Status Branch, categorizing by claimant nationality and financial year.

Note: Claim(s) lodged by each claimant are categorised as either claim (initial) or subsequent claim, with subsequent claims being the second and subsequent claims lodged by a claimant.

Distinction between claim and subsequent presented in Application Criteria field.

July 01, 1997 to February 05, 2012

## RefugeeClaimants

	FinancialYearTendered															Total
	1997/98	1998/99	1999/00	2000/01	2001/02	2002/03	2003/04	2004/05	2005/06	2006/07	2007/08	2008/09	2009/10	2010/11	2011/12	
nationality																
Libya	1	3	2	.	1	7	.	.	.	.	.	.	.	2	2	18
Lithuania	.	4	2	6	.	.	.	.	.	.	.	.	2	.	.	14
Macau	.	.	.	.	.	.	.	.	.	.	.	1	.	.	.	1
Macedonia	5	5	6	5	4	.	.	.	.	.	.	.	.	.	.	25
Madagascar	.	.	3	.	.	.	.	.	.	.	.	.	4	.	.	7
Malaysia	8	86	68	56	29	33	27	12	.	2	11	7	2	2	1	344
Mali	1	.	.	1	.	.	.	3	.	.	.	.	.	.	.	5
Mexico	.	.	.	.	.	.	.	.	.	.	3	1	1	1	.	6
Moldova	.	.	1	.	3	.	.	.	1	.	.	.	.	.	.	5
Mongolia	.	.	5	.	.	1	3	.	.	.	.	.	.	.	1	10
Morocco	10	3	7	.	2	4	.	.	.	.	.	.	.	.	.	26
Mozambique	2	.	.	.	.	.	.	.	.	.	.	.	.	.	.	2
Myanmar	4	4	3	7	6	5	9	11	1	6	8	1	2	2	2	71
Namibia	.	3	.	.	.	.	.	.	.	.	.	.	.	.	.	3
Nauru	.	.	.	10	.	.	.	2	.	.	.	.	.	.	.	12
Nepal	10	9	1	7	11	4	6	15	10	2	3	3	4	4	2	91
Nigeria	23	14	9	12	17	11	6	3	6	1	1	1	3	.	1	108
North Korea	2	.	.	.	.	.	1	.	.	.	.	2	.	2	.	7
Oman	.	.	1	.	.	1	.	.	.	.	.	.	.	.	.	2
Pakistan	32	31	30	19	29	12	9	6	9	7	9	6	18	15	11	243
Palestine	.	.	1	5	5	.	1	2	.	3	.	.	4	2	.	23
Papua New Guinea	.	.	1	.	.	1	.	.	.	.	1	.	.	.	1	4
Peru	12	2	3	2	1	3	.	6	.	1	.	.	.	.	.	30
Philippines	8	19	17	6	2	.	2	2	.	1	.	1	1	.	1	60

(Continued)

# Refugee claims tendered by Refugee Status Branch, by claimant nationality and financial year.

Summary: This table summarises the number of refugee claims tendered by the Refugee Status Branch, categorizing by claimant nationality and financial year.

Note: Claim(s) lodged by each claimant are categorised as either claim (initial) or subsequent claim, with subsequent claims being the second and subsequent claims lodged by a claimant.

Distinction between claim and subsequent presented in Application Criteria field.

July 01, 1997 to February 05, 2012

## RefugeeClaimants

	FinancialYearTendered															Total
	1997/98	1998/99	1999/00	2000/01	2001/02	2002/03	2003/04	2004/05	2005/06	2006/07	2007/08	2008/09	2009/10	2010/11	2011/12	
nationality																
Poland	4	4	.	3	.	.	2	1	.	2	8	1	.	1	.	26
Portugal	2	1	.	.	.	.	.	.	.	.	.	.	.	.	.	3
Romania	.	1	1	9	3	1	.	1	12	.	.	1	.	.	1	30
Russia	42	16	16	.	4	5	2	4	3	2	2	2	.	3	.	101
Rwanda	3	1	.	.	2	2	1	.	.	.	.	.	1	1	.	11
Samoa	2	1	.	.	.	.	.	.	.	.	.	.	2	.	.	5
Saudi Arabia	.	.	.	.	2	5	10	.	.	4	4	4	11	11	1	52
Serbia & Montenegro	.	.	.	.	.	.	.	.	1	.	.	.	.	.	.	1
Sierra Leone	13	12	3	9	5	1	.	.	2	1	2	.	.	.	.	48
Singapore	.	4	.	4	.	.	1	.	.	.	.	1	1	1	.	12
Slovakia	.	2	4	5	.	.	2	.	10	1	5	1	16	.	1	47
Slovenia	.	1	.	.	.	.	.	.	.	.	.	.	.	.	.	1
Solomon Islands	.	.	.	8	.	3	1	.	.	.	.	.	.	.	.	12
Somalia	90	20	16	9	16	24	12	9	15	4	4	4	2	2	1	228
South Africa	22	21	14	10	12	10	16	1	5	1	2	7	18	17	5	161
South Korea	304	45	2	.	1	.	2	1	.	.	1	.	1	3	.	360
Soviet Union	2	.	.	.	.	.	1	.	.	.	.	.	.	.	.	3
Sri Lanka	127	156	120	119	70	27	27	13	17	20	36	23	34	21	11	821
Stateless	2	.	4	2	6	1	2	.	.	.	.	.	.	1	.	18
Sudan	6	4	2	4	4	3	5	3	2	2	.	1	3	.	.	39
Switzerland	.	.	.	2	.	.	.	.	.	.	.	.	.	.	.	2
Syria	5	6	3	2	5	8	7	10	10	2	1	10	3	.	2	74
Taiwan	9	6	.	.	.	2	.	.	.	.	.	.	.	.	.	17
Tajikistan	.	1	.	1	.	.	.	.	.	.	.	.	.	.	.	2

(Continued)

# Refugee claims tendered by Refugee Status Branch, by claimant nationality and financial year.

Summary: This table summarises the number of refugee claims tendered by the Refugee Status Branch, categorizing by claimant nationality and financial year.

Note: Claim(s) lodged by each claimant are categorised as either claim (initial) or subsequent claim, with subsequent claims being the second and subsequent claims lodged by a claimant.

Distinction between claim and subsequent presented in Application Criteria field.

July 01, 1997 to February 05, 2012

## RefugeeClaimants

	FinancialYearTendered															Total
	1997/98	1998/99	1999/00	2000/01	2001/02	2002/03	2003/04	2004/05	2005/06	2006/07	2007/08	2008/09	2009/10	2010/11	2011/12	
nationality																
Tanzania	.	.	1	3	1	.	.	.	.	.	.	.	.	.	.	5
Thailand	33	251	202	460	457	158	67	6	.	.	1	.	.	1	.	1,636
Togo	2	1	.	.	.	2	.	.	2	.	.	.	.	.	.	7
Tonga	9	3	22	23	1	.	.	.	.	.	.	.	.	.	.	58
Tunisia	1	5	4	.	.	.	.	1	.	.	.	.	.	3	.	14
Turkey	19	3	3	14	4	.	1	2	2	5	2	2	4	2	5	68
Tuvalu	.	.	39	25	.	.	.	.	.	.	.	.	.	.	1	65
Uganda	.	.	1	1	1	.	2	.	.	1	1	.	.	3	1	11
Ukraine	39	24	4	.	2	.	3	1	.	1	1	.	.	.	.	75
United Arab Emirates	.	.	.	.	.	.	1	.	.	.	.	.	.	.	6	7
United States of America	.	1	.	.	.	4	.	.	.	2	.	.	.	.	2	9
Uruguay	.	.	1	.	.	.	.	1	.	.	.	.	.	2	.	4
Uzbekistan	1	.	.	.	1	.	.	.	.	.	.	.	.	1	.	3
Vanuatu	1	.	.	.	.	.	.	.	.	.	.	.	.	.	1	2
Venezuela	1	.	1	.	.	.	.	.	.	.	.	.	.	.	.	2
Vietnam	107	113	23	15	4	4	7	7	2	.	1	1	1	.	1	286
Yemen	1	.	1	1	1	.	.	.	.	.	.	.	1	.	.	5
Yugoslavia	2	24	5	6	3	.	1	.	.	.	.	.	.	.	.	41
Zambia	.	.	.	2	.	.	.	.	.	.	.	.	.	.	.	2
Zimbabwe	.	.	14	86	76	110	17	5	10	7	9	5	10	6	1	356
<b>Total</b>	2,591	2,646	1,456	1,703	1,441	955	713	399	317	244	267	246	384	337	167	13,866

# ***Refugee claims decided by Refugee Status Branch, by financial year.***

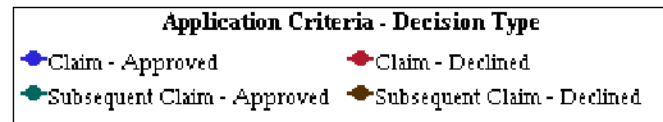
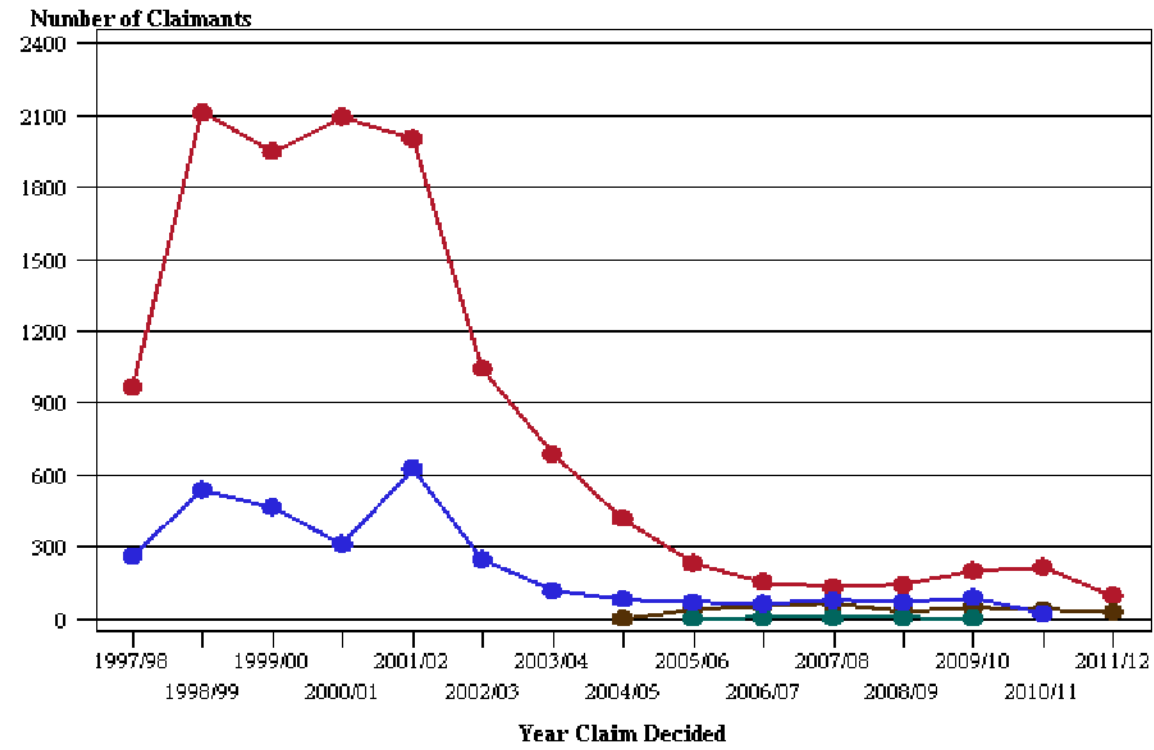
*Summary: This table summarises the number of refugee claims decided by the Refugee Status Branch.*

*Note: (i) Claim(s) lodged by each claimant are categorised as either claim (initial) or subsequent claim, with subsequent claims being the second and subsequent claims lodged by a claimant. Distinction between claim and subsequent presented in Application Criteria field.  
July 01, 1997 to February 05, 2012*

## RefugeeClaimants

	Application criteria						Total
	Claim			Subsequent Claim			
	Decision Type		Total	Decision Type		Total	
	Approved	Declined		Approved	Declined		
<b>FinancialYearDecided</b>							
1997/98	260	966	1,226	.	.	.	1,226
1998/99	536	2,110	2,646	.	.	.	2,646
1999/00	464	1,947	2,411	.	.	.	2,411
2000/01	311	2,091	2,402	.	.	.	2,402
2001/02	627	2,002	2,629	.	.	.	2,629
2002/03	247	1,042	1,289	.	.	.	1,289
2003/04	115	686	801	.	.	.	801
2004/05	81	417	498	.	1	1	499
2005/06	67	231	298	1	41	42	340
2006/07	62	153	215	4	52	56	271
2007/08	77	132	209	4	62	66	275
2008/09	69	139	208	3	29	32	240
2009/10	89	198	287	2	46	48	335
2010/11	21	215	236	.	35	35	271
2011/12	.	97	97	.	29	29	126
<b>Total</b>	3,026	12,426	15,452	14	295	309	15,761

# Number of Refugee Status Claims Decided



# *Refugee claims decided by Refugee Status Branch, by claimant nationality and financial year of decision.*

*Summary: This table summarises the number of refugee claims decided by the Refugee Status Branch, categorizing by claimant nationality and financial year of decision.*

*Notes: Claim(s) lodged by each claimant are categorised as either claim (initial) or subsequent claim, with subsequent claims being the second and subsequent claims lodged by a claimant.*

*Distinction between claim and subsequent presented in Application Criteria field.*

*July 01, 1997 to February 05, 2012*

## RefugeeClaimants

	FinancialYearDecided															Total
	1997/98	1998/99	1999/00	2000/01	2001/02	2002/03	2003/04	2004/05	2005/06	2006/07	2007/08	2008/09	2009/10	2010/11	2011/12	
nationality																
(not recorded)	57	155	71	30	21	6	3	2	2	.	1	1	1	.	.	350
Afghanistan	14	95	118	9	179	7	4	1	.	.	3	4	.	6	1	441
Albania	1	1	2	3	14	1	9	.	.	.	.	2	.	.	.	33
Algeria	4	15	11	8	30	12	6	1	.	1	2	1	4	.	.	95
Angola	.	.	1	.	1	.	.	.	.	.	.	1	.	.	.	3
Argentina	1	.	.	.	1	11	.	.	.	.	.	.	.	.	.	13
Armenia	.	.	.	.	1	.	.	.	.	.	.	.	.	.	.	1
Austria	.	.	.	4	.	.	.	.	.	.	.	.	.	.	.	4
Azerbaijan	.	.	1	.	.	2	.	.	.	.	.	.	.	.	.	3
Bahrain	.	2	3	2	1	.	.	.	1	.	.	.	.	.	5	14
Bangladesh	14	12	35	32	46	35	35	21	25	15	13	8	6	5	1	303
Belarus	.	.	.	.	.	.	.	1	.	.	.	.	2	.	.	3
Belgium	1	.	.	1	1	1	.	.	.	.	.	.	.	.	.	4
Bolivia	7	.	3	17	4	.	.	.	1	1	3	1	1	.	.	38
Bosnia & Herzegovina	2	4	1	1	2	.	.	.	.	.	.	.	.	.	.	10
Brazil	2	.	1	1	.	3	9	4	6	.	1	.	8	3	.	38
Brunei Darussalam	1	.	.	.	.	.	.	.	.	.	.	.	.	.	.	1
Bulgaria	6	22	13	8	16	4	.	4	5	.	.	.	.	1	.	79
Burundi	1	1	3	3	.	.	1	1	.	.	.	.	.	.	.	10
Cambodia	.	9	8	41	6	2	3	.	.	.	1	.	.	.	.	70
Cameroon	.	2	.	.	.	1	.	.	.	.	.	2	1	.	.	6
Canada	.	2	1	.	.	.	.	.	1	.	.	.	.	.	1	5

(Continued)

# *Refugee claims decided by Refugee Status Branch, by claimant nationality and financial year of decision.*

*Summary: This table summarises the number of refugee claims decided by the Refugee Status Branch, categorizing by claimant nationality and financial year of decision.*

*Notes: Claim(s) lodged by each claimant are categorised as either claim (initial) or subsequent claim, with subsequent claims being the second and subsequent claims lodged by a claimant.*

*Distinction between claim and subsequent presented in Application Criteria field.*

*July 01, 1997 to February 05, 2012*

## RefugeeClaimants

	FinancialYearDecided															Total
	1997/98	1998/99	1999/00	2000/01	2001/02	2002/03	2003/04	2004/05	2005/06	2006/07	2007/08	2008/09	2009/10	2010/11	2011/12	
nationality																
Chad	.	1	.	.	.	.	.	.	.	5	3	1	.	1	1	12
Chile	.	.	.	9	37	26	20	25	2	3	.	3	.	.	2	127
China	180	536	521	329	179	41	55	40	16	36	26	21	21	15	6	2,022
Colombia	.	3	4	8	26	9	8	.	2	1	1	2	3	3	2	72
Congo	.	2	.	8	7	4	1	1	.	.	1	1	.	.	.	25
Costa Rica	.	1	.	.	.	.	.	.	.	.	.	.	.	.	.	1
Croatia	.	.	4	.	2	1	.	.	.	.	.	.	.	.	.	7
Cuba	.	.	.	.	.	2	.	.	1	1	.	.	.	.	.	4
Czech Republic	.	40	14	105	155	19	12	23	28	10	6	10	21	9	3	455
Democratic Republic of Congo	2	1	2	.	13	9	2	3	1	.	1	4	.	1	2	41
Denmark	.	.	.	.	1	.	.	.	.	.	.	.	.	.	.	1
Djibouti	1	.	.	.	.	.	.	.	.	.	.	.	.	.	.	1
Dominica	.	.	.	.	2	.	.	.	.	.	.	.	.	.	.	2
Ecuador	.	.	.	.	4	.	1	.	.	.	.	.	.	.	.	5
Egypt	.	13	3	1	7	5	4	1	6	.	2	4	7	5	9	67
El Salvador	.	.	.	.	.	.	.	.	3	.	.	.	.	.	.	3
Eritrea	.	.	.	1	1	.	4	1	1	2	.	2	.	1	.	13
Estonia	.	.	.	.	.	.	.	.	.	.	.	2	.	.	.	2
Ethiopia	20	21	5	2	9	8	6	3	7	.	4	.	4	3	.	92
Faeroe Islands	.	.	1	.	.	.	.	.	.	.	.	.	.	.	.	1
Fiji	210	59	55	58	43	26	19	3	16	5	11	17	46	56	14	638
France	.	.	2	.	.	.	1	.	.	.	.	.	.	.	.	3

(Continued)

# *Refugee claims decided by Refugee Status Branch, by claimant nationality and financial year of decision.*

*Summary: This table summarises the number of refugee claims decided by the Refugee Status Branch, categorizing by claimant nationality and financial year of decision.*

*Notes: Claim(s) lodged by each claimant are categorised as either claim (initial) or subsequent claim, with subsequent claims being the second and subsequent claims lodged by a claimant.*

*Distinction between claim and subsequent presented in Application Criteria field.*

*July 01, 1997 to February 05, 2012*

## RefugeeClaimants

	FinancialYearDecided															Total
	1997/98	1998/99	1999/00	2000/01	2001/02	2002/03	2003/04	2004/05	2005/06	2006/07	2007/08	2008/09	2009/10	2010/11	2011/12	
nationality																
Gabon	.	.	1	.	.	.	.	.	.	.	.	.	.	.	.	1
Georgia	.	.	1	.	.	.	.	2	2	.	.	.	.	.	1	6
Germany	.	1	.	.	.	.	.	.	.	.	.	.	.	7	.	8
Ghana	7	7	6	7	4	1	.	.	.	.	.	2	3	3	1	41
Great Britain	5	3	1	3	.	1	2	.	.	.	4	.	.	.	.	19
Greece	.	1	.	.	.	.	.	.	.	.	.	.	.	.	.	1
Guinea	.	.	.	.	.	1	.	.	.	.	.	.	.	.	.	1
Guinea - Bissau	.	.	.	.	.	.	.	.	.	.	.	.	1	.	.	1
Hong Kong	13	15	21	4	1	1	.	1	.	.	.	.	.	1	.	57
Hungary	.	.	.	.	4	81	28	8	.	9	10	.	.	5	.	145
Iceland	1	.	.	.	.	.	.	.	.	.	.	.	.	.	.	1
India	153	158	147	177	246	105	86	68	14	16	7	14	24	.	.	1,215
Indonesia	28	217	477	127	17	9	1	.	1	.	1	.	1	3	1	883
Iran	105	174	123	105	232	144	114	96	36	32	23	26	26	29	17	1,282
Iraq	23	23	30	28	88	39	34	16	29	26	41	24	20	8	5	434
Ireland	.	.	.	.	2	1	.	.	.	.	.	.	.	.	.	3
Israel	3	3	1	.	6	5	6	6	3	6	.	2	.	2	1	44
Italy	.	1	.	.	.	.	1	.	.	.	.	.	.	.	.	2
Ivory Coast	.	.	.	1	.	.	.	.	.	.	.	.	.	.	.	1
Japan	8	4	4	1	2	.	.	.	.	.	.	.	.	1	1	21
Jordan	.	3	.	1	11	6	5	13	3	.	1	.	.	1	3	47
Kazakhstan	11	15	4	.	1	.	.	1	.	.	.	.	.	1	.	33

(Continued)

# *Refugee claims decided by Refugee Status Branch, by claimant nationality and financial year of decision.*

*Summary: This table summarises the number of refugee claims decided by the Refugee Status Branch, categorizing by claimant nationality and financial year of decision.*

*Notes: Claim(s) lodged by each claimant are categorised as either claim (initial) or subsequent claim, with subsequent claims being the second and subsequent claims lodged by a claimant.*

*Distinction between claim and subsequent presented in Application Criteria field.*

*July 01, 1997 to February 05, 2012*

RefugeeClaimants

	FinancialYearDecided															Total
	1997/98	1998/99	1999/00	2000/01	2001/02	2002/03	2003/04	2004/05	2005/06	2006/07	2007/08	2008/09	2009/10	2010/11	2011/12	
nationality																
Kenya	.	.	.	1	.	.	.	.	.	.	1	1	.	.	.	3
Kiribati	.	.	.	12	.	.	1	.	.	.	.	.	1	.	2	16
Kosovo - Republic of	.	1	.	.	.	.	.	.	.	.	.	.	.	.	.	1
Kuwait	1	.	14	16	34	11	3	1	.	1	.	.	.	2	.	83
Kyrgyzstan	.	.	.	.	.	2	.	2	.	4	.	.	1	.	.	9
Laos	.	.	3	1	5	1	1	1	.	.	.	.	.	.	.	12
Latvia	.	4	1	.	3	3	1	.	.	1	.	.	.	.	.	13
Lebanon	1	1	2	5	6	3	4	.	.	.	.	1	2	.	1	26
Liberia	4	16	8	6	5	1	.	.	.	.	.	.	.	.	.	40
Libya	.	.	6	.	1	1	6	.	.	.	.	.	.	.	2	16
Lithuania	.	.	.	2	6	4	.	.	.	.	.	.	2	.	.	14
Macau	.	.	.	.	.	.	.	.	.	.	.	1	.	.	.	1
Macedonia	.	4	6	9	2	4	.	.	.	.	.	.	.	.	.	25
Madagascar	.	.	.	.	3	.	.	.	.	.	.	.	4	.	.	7
Malaysia	24	11	119	72	36	30	25	14	7	.	11	9	1	3	.	362
Mali	.	1	.	.	1	.	.	.	3	.	.	.	.	.	.	5
Mexico	.	.	.	.	.	.	.	.	.	.	.	3	1	2	.	6
Moldova	.	.	.	.	3	1	.	.	.	1	.	.	.	.	.	5
Mongolia	.	.	.	4	1	.	1	3	.	.	.	.	.	.	.	9
Morocco	8	10	9	8	7	1	3	.	.	.	.	.	.	.	.	46
Mozambique	2	.	.	1	1	.	.	.	.	.	.	.	.	.	.	4
Myanmar	15	2	4	9	4	9	6	12	7	5	6	4	1	2	.	86

(Continued)

# *Refugee claims decided by Refugee Status Branch, by claimant nationality and financial year of decision.*

*Summary: This table summarises the number of refugee claims decided by the Refugee Status Branch, categorizing by claimant nationality and financial year of decision.*

*Notes: Claim(s) lodged by each claimant are categorised as either claim (initial) or subsequent claim, with subsequent claims being the second and subsequent claims lodged by a claimant.*

*Distinction between claim and subsequent presented in Application Criteria field.*

*July 01, 1997 to February 05, 2012*

RefugeeClaimants

	FinancialYearDecided															Total
	1997/98	1998/99	1999/00	2000/01	2001/02	2002/03	2003/04	2004/05	2005/06	2006/07	2007/08	2008/09	2009/10	2010/11	2011/12	
<b>nationality</b>																
Namibia	.	.	.	3	.	.	.	.	.	.	.	.	.	.	.	3
Nauru	.	.	.	10	.	.	.	.	2	.	.	.	.	.	.	12
Nepal	1	2	9	5	21	14	9	3	19	5	1	5	1	4	3	102
Nigeria	13	22	8	17	25	15	10	1	7	1	2	.	2	1	1	125
North Korea	.	1	.	.	1	.	.	1	.	.	.	2	.	2	.	7
Oman	.	.	.	.	1	.	1	.	.	.	.	.	.	.	.	2
Pakistan	10	15	29	26	69	31	5	11	5	13	9	2	20	6	9	260
Palestine	.	.	.	1	7	3	.	3	.	2	1	.	4	1	.	22
Papua New Guinea	.	.	.	.	1	1	.	.	.	.	.	1	.	.	1	4
Peru	4	10	3	1	6	4	3	6	.	1	.	.	.	.	.	38
Philippines	.	5	14	28	8	2	1	2	.	1	.	1	1	.	.	63
Poland	1	4	1	5	1	.	2	.	1	2	8	1	.	1	.	27
Portugal	.	1	2	.	.	.	.	.	.	.	.	.	.	.	.	3
Romania	.	1	2	.	9	3	1	1	10	2	.	1	.	.	.	30
Russia	33	43	50	15	10	7	1	5	2	3	2	.	2	2	1	176
Rwanda	3	3	.	.	2	3	.	1	.	.	.	.	.	2	.	14
Samoa	1	2	.	.	.	.	.	.	.	.	.	.	2	.	.	5
Saudi Arabia	.	.	.	.	1	5	11	.	.	4	2	3	6	13	4	49
Serbia & Montenegro	.	.	.	.	.	.	.	.	.	1	.	.	.	.	.	1
Sierra Leone	7	10	6	5	14	4	.	.	2	.	3	.	.	.	.	51
Singapore	2	2	3	4	1	.	.	1	.	.	.	1	.	2	.	16
Slovakia	.	.	.	6	5	.	2	.	9	1	4	3	16	.	.	46

(Continued)

# *Refugee claims decided by Refugee Status Branch, by claimant nationality and financial year of decision.*

*Summary: This table summarises the number of refugee claims decided by the Refugee Status Branch, categorizing by claimant nationality and financial year of decision.*

*Notes: Claim(s) lodged by each claimant are categorised as either claim (initial) or subsequent claim, with subsequent claims being the second and subsequent claims lodged by a claimant.*

*Distinction between claim and subsequent presented in Application Criteria field.*

*July 01, 1997 to February 05, 2012*

RefugeeClaimants

	FinancialYearDecided															Total
	1997/98	1998/99	1999/00	2000/01	2001/02	2002/03	2003/04	2004/05	2005/06	2006/07	2007/08	2008/09	2009/10	2010/11	2011/12	
nationality																
Slovenia	.	.	.	1	.	.	.	.	.	.	.	.	.	.	.	1
Solomon Islands	.	.	.	6	2	3	1	.	.	.	.	.	.	.	12	
Somalia	31	106	36	8	18	22	13	12	7	8	4	6	1	1	1	274
South Africa	5	7	16	10	39	13	18	2	3	3	2	6	11	22	4	161
South Korea	80	299	3	2	.	.	3	1	.	.	1	.	1	.	.	390
Soviet Union	4	2	2	.	.	.	.	1	.	.	.	.	.	.	.	9
Spain	1	.	.	.	.	.	.	.	.	.	.	.	.	.	.	1
Sri Lanka	73	117	164	110	200	71	21	22	12	26	34	19	34	20	9	932
Stateless	.	2	.	5	1	6	2	1	.	.	.	.	.	1	.	18
Sudan	.	4	7	4	10	4	2	7	1	2	1	.	4	.	.	46
Suriname	.	1	.	.	.	.	.	.	.	.	.	.	.	.	.	1
Switzerland	.	.	1	.	2	.	.	.	.	.	.	.	.	.	.	3
Syria	1	2	11	3	4	7	13	11	10	1	2	9	1	3	.	78
Taiwan	2	8	3	7	1	1	1	.	.	.	.	.	.	.	.	23
Tajikistan	.	1	.	1	.	.	.	.	.	.	.	.	.	.	.	2
Tanzania	.	.	1	2	1	1	.	.	.	.	.	.	.	.	.	5
Thailand	6	147	73	560	448	241	83	11	.	.	1	.	.	.	.	1,570
Togo	1	1	2	.	1	2	.	.	2	.	.	.	.	.	.	9
Tonga	5	3	4	40	7	.	.	.	.	.	.	.	.	.	.	59
Tunisia	.	.	7	2	2	.	.	.	1	.	.	.	.	3	.	15
Turkey	1	5	13	6	24	5	.	2	2	5	1	2	5	1	2	74
Tuvalu	.	.	.	63	1	.	.	.	.	.	.	.	.	.	1	65

(Continued)

# *Refugee claims decided by Refugee Status Branch, by claimant nationality and financial year of decision.*

*Summary: This table summarises the number of refugee claims decided by the Refugee Status Branch, categorizing by claimant nationality and financial year of decision.*

*Notes: Claim(s) lodged by each claimant are categorised as either claim (initial) or subsequent claim, with subsequent claims being the second and subsequent claims lodged by a claimant.*

*Distinction between claim and subsequent presented in Application Criteria field.*

*July 01, 1997 to February 05, 2012*

## RefugeeClaimants

	FinancialYearDecided															Total
	1997/98	1998/99	1999/00	2000/01	2001/02	2002/03	2003/04	2004/05	2005/06	2006/07	2007/08	2008/09	2009/10	2010/11	2011/12	
<b>nationality</b>																
Uganda	.	.	.	.	1	2	2	.	.	.	2	.	.	.	2	9
Ukraine	1	29	40	6	8	.	3	1	.	1	1	.	.	.	.	90
United Arab Emirates	.	.	.	.	.	.	1	.	.	.	.	.	.	.	.	1
United States of America	.	.	1	.	.	4	.	.	.	1	1	.	.	.	2	9
Uruguay	.	.	.	.	.	1	.	.	1	.	.	.	.	2	.	4
Uzbekistan	2	.	1	.	.	1	.	.	.	.	.	.	.	.	.	4
Vanuatu	.	.	.	.	1	.	.	.	.	.	.	.	.	.	1	2
Venezuela	.	.	1	1	.	.	.	.	.	.	.	.	.	.	.	2
Vietnam	.	111	18	106	24	4	8	5	6	.	1	.	2	.	.	285
Yemen	.	.	2	.	1	1	.	.	.	.	.	.	1	.	.	5
Yugoslavia	2	8	7	10	9	7	.	1	.	.	.	.	.	.	.	44
Zambia	.	.	.	1	1	.	.	.	.	.	.	.	.	.	.	2
Zimbabwe	.	.	.	41	100	101	53	8	9	7	8	4	8	5	3	347

# *Refugee claims decided by Refugee Status Branch, by claimant age group and financial year of decision.*

*Summary: This table summarises the number of refugee claims decided by the Refugee Status Branch, categorizing by claimant age group and financial year of decision.*

*Note: Claim(s) lodged by each claimant are categorised as either claim (initial) or subsequent claim, with subsequent claims being the second and subsequent claims lodged by a claimant.*

*Distinction between claim and subsequent presented in Application Criteria field.*

*July 01, 1997 to February 05, 2012*

RefugeeClaimants

	AgeRange							Total
	0-19 Years	20-29 Years	30-39 Years	40-49 Years	50-59 Years	60-64 Years	65+ Years	
FinancialYearDecided								
1997/98	290	346	377	160	31	11	11	1,226
1998/99	700	733	748	333	75	28	29	2,646
1999/00	357	701	809	383	82	31	48	2,411
2000/01	236	740	838	423	104	18	43	2,402
2001/02	458	702	895	399	117	28	30	2,629
2002/03	176	428	430	182	51	7	15	1,289
2003/04	99	304	249	93	40	8	8	801
2004/05	77	163	166	64	26	1	2	499
2005/06	68	102	105	39	19	2	5	340
2006/07	50	74	80	41	19	3	4	271
2007/08	53	65	75	42	20	4	16	275
2008/09	44	62	73	41	15	1	4	240
2009/10	77	74	93	63	16	4	8	335
2010/11	50	58	74	56	22	4	7	271
2011/12	18	39	41	14	10	2	2	126
Total	2,753	4,591	5,053	2,333	647	152	232	15,761

## ***Approve and decline rates for Refugee Status claims decided by Refugee Status Branch.***

***Note: Claim(s) lodged by each claimant are categorised as either claim (initial) or subsequent claim, with subsequent claims being the second and subsequent claims lodged by a claimant.***

***Distinction between claim and subsequent presented in Application Criteria field.***

***July 01, 1997 to February 05, 2012***

<b>FinancialYearDecided</b>	<b>Approved</b>	<b>Declined</b>	<b>Total_Decided</b>	<b>Approved (%)</b>	<b>Declined (%)</b>
1997/98	260	966	1226	21.2	78.8
1998/99	536	2110	2646	20.3	79.7
1999/00	464	1947	2411	19.2	80.8
2000/01	311	2091	2402	12.9	87.1
2001/02	627	2002	2629	23.8	76.2
2002/03	247	1042	1289	19.2	80.8
2003/04	115	686	801	14.4	85.6
2004/05	81	418	499	16.2	83.8
2005/06	68	272	340	20.0	80.0
2006/07	66	205	271	24.4	75.6
2007/08	81	194	275	29.5	70.5
2008/09	72	168	240	30.0	70.0
2009/10	91	244	335	27.2	72.8
2010/11	21	250	271	7.7	92.3
2011/12	0	126	126	0.0	100.0

# Processing times for Refugee Status claims decided.

*Note: Claim(s) lodged by each claimant are categorised as either claim (initial) or subsequent claim, with subsequent claims being the second and subsequent claims lodged by a claimant.*

*Distinction between claim and subsequent presented in Application Criteria field.*

*July 01, 1997 to February 05, 2012*

Average\_months

	Application Criteria	
	Claim	Subsequent Claim
Month Claim Decided		
2005-01	6.1	.
2005-02	7.1	.
2005-03	5.7	.
2005-04	8.5	.
2005-05	6.9	.
2005-06	4.6	1.0
2005-07	3.7	1.0
2005-08	4.9	2.0
2005-09	5.1	3.0
2005-10	4.9	1.5
2005-11	4.5	3.5
2005-12	4.6	3.9
2006-01	5.5	4.0
2006-02	5.6	5.0
2006-03	4.2	5.0
2006-04	9.5	4.0
2006-05	6.6	4.5
2006-06	4.1	3.3
2006-07	2.7	.
2006-08	5.5	2.8
2006-09	5.0	2.6
2006-10	4.4	2.5

(Continued)

# Processing times for Refugee Status claims decided.

*Note: Claim(s) lodged by each claimant are categorised as either claim (initial) or subsequent claim, with subsequent claims being the second and subsequent claims lodged by a claimant.*

*Distinction between claim and subsequent presented in Application Criteria field.*

*July 01, 1997 to February 05, 2012*

Average\_months

	Application Criteria	
	Claim	Subsequent Claim
Month Claim Decided		
2006-11	6.6	6.5
2006-12	6.0	4.0
2007-01	6.6	4.0
2007-02	6.2	3.0
2007-03	4.8	1.3
2007-04	6.4	4.5
2007-05	5.8	2.0
2007-06	5.2	3.7
2007-07	5.3	0.5
2007-08	3.8	0.0
2007-09	5.5	3.2
2007-10	4.0	3.8
2007-11	4.4	7.8
2007-12	3.8	2.7
2008-01	6.0	1.0
2008-02	4.8	3.5
2008-03	4.5	4.5
2008-04	4.4	3.6
2008-05	5.0	3.9
2008-06	3.7	4.0
2008-07	3.8	2.5
2008-08	2.6	3.5

(Continued)

# Processing times for Refugee Status claims decided.

*Note: Claim(s) lodged by each claimant are categorised as either claim (initial) or subsequent claim, with subsequent claims being the second and subsequent claims lodged by a claimant.*

*Distinction between claim and subsequent presented in Application Criteria field.*

*July 01, 1997 to February 05, 2012*

Average\_months

	Application Criteria	
	Claim	Subsequent Claim
<b>Month Claim Decided</b>		
<b>2008-09</b>	2.7	4.0
<b>2008-10</b>	3.6	3.0
<b>2008-11</b>	4.9	5.5
<b>2008-12</b>	4.3	.
<b>2009-01</b>	3.5	2.3
<b>2009-02</b>	5.8	5.5
<b>2009-03</b>	3.0	1.0
<b>2009-04</b>	3.7	2.7
<b>2009-05</b>	4.4	3.5
<b>2009-06</b>	4.3	4.0
<b>2009-07</b>	3.3	.
<b>2009-08</b>	5.0	3.4
<b>2009-09</b>	3.5	4.0
<b>2009-10</b>	3.0	3.3
<b>2009-11</b>	3.2	3.3
<b>2009-12</b>	3.3	3.5
<b>2010-01</b>	3.3	4.0
<b>2010-02</b>	3.8	3.0
<b>2010-03</b>	4.4	.
<b>2010-04</b>	3.7	4.0
<b>2010-05</b>	4.4	4.1
<b>2010-06</b>	5.0	3.6

(Continued)

# Processing times for Refugee Status claims decided.

*Note: Claim(s) lodged by each claimant are categorised as either claim (initial) or subsequent claim, with subsequent claims being the second and subsequent claims lodged by a claimant.*

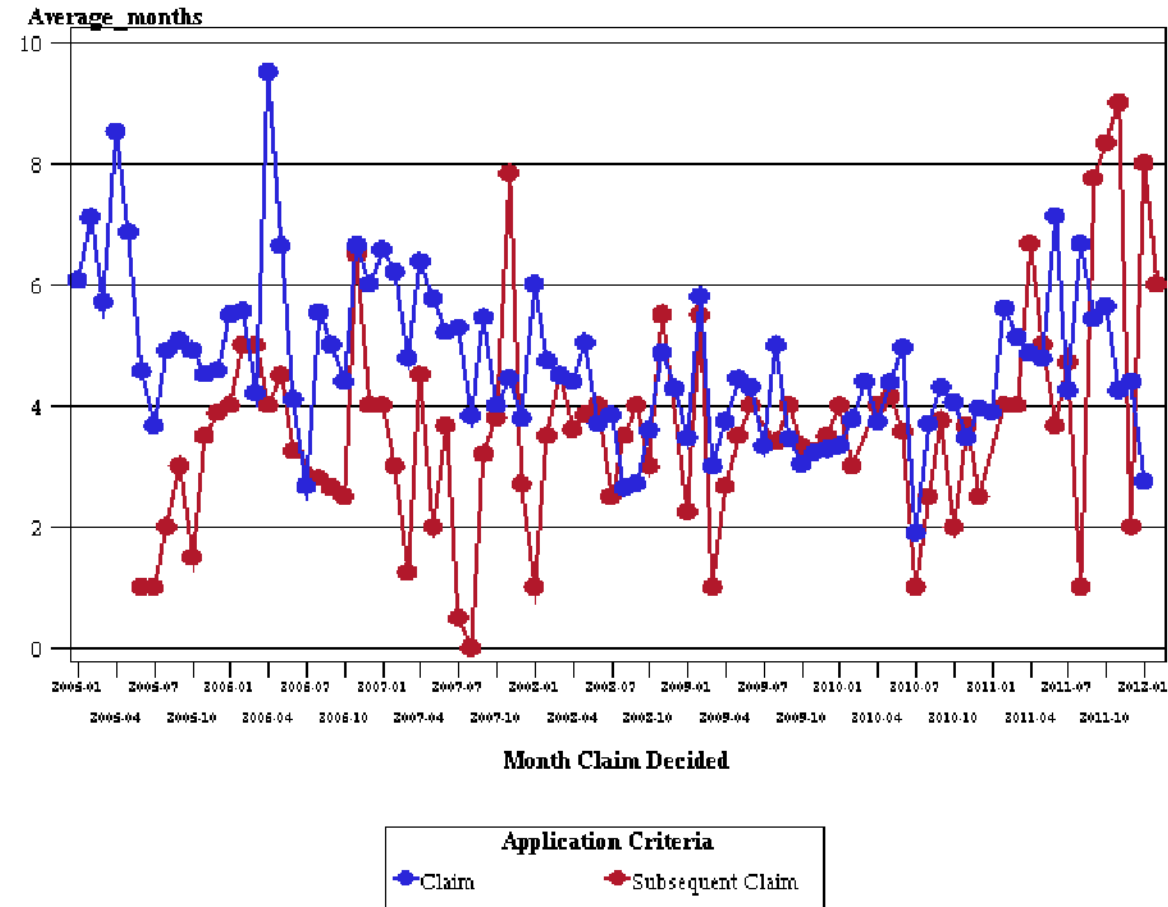
*Distinction between claim and subsequent presented in Application Criteria field.*

*July 01, 1997 to February 05, 2012*

Average\_months

	Application Criteria	
	Claim	Subsequent Claim
<b>Month Claim Decided</b>		
2010-07	1.9	1.0
2010-08	3.7	2.5
2010-09	4.3	3.8
2010-10	4.0	2.0
2010-11	3.5	3.7
2010-12	4.0	2.5
2011-01	3.9	.
2011-02	5.6	4.0
2011-03	5.1	4.0
2011-04	4.9	6.7
2011-05	4.8	5.0
2011-06	7.1	3.7
2011-07	4.3	4.7
2011-08	6.7	1.0
2011-09	5.4	7.8
2011-10	5.6	8.3
2011-11	4.3	9.0
2011-12	4.4	2.0
2012-01	2.8	8.0
2012-02	.	6.0

# Refugee Status Claims Processing Time



# ***Refugee Status claims on hand with Refugee Status Branch, by claimant nationality.***

*Note (i): Claim(s) lodged by each claimant are categorised as either claim (initial) or subsequent claim, with subsequent claims being the second and subsequent claims lodged by a claimant.*

*Distinction between claim and subsequent presented in Application Criteria field.*

*(ii): This report regards a claim as on hand if the claim has been tendered to the Refugee Status Branch and the branch is yet to decide the claim. The number of claims on hand are presented here as at the start of the month selected in the Month field.*

*July 01, 1997 to February 05, 2012*

## ApplicationClients

	Month_OnHand					Total
	10-12 months	4-6 months	7-9 months	Less than 3 months	Over 12 months	
<b>nationality</b>						
<b>(not recorded)</b>	7	13	6	44	42	112
<b>Afghanistan</b>	14	30	12	99	85	240
<b>Albania</b>	1	17	5	55	19	97
<b>Algeria</b>	37	36	38	75	47	233
<b>Angola</b>	.	.	.	4	5	9
<b>Argentina</b>	2	26	23	37	.	88
<b>Armenia</b>	.	.	.	.	3	3
<b>Azerbaijan</b>	.	3	3	3	12	21
<b>Bahrain</b>	1	25	.	98	1	125
<b>Bangladesh</b>	34	221	106	496	173	1,030
<b>Belarus</b>	1	5	3	12	.	21
<b>Belgium</b>	1	3	3	5	.	12
<b>Bolivia</b>	.	19	4	24	.	47
<b>Brazil</b>	5	28	20	107	8	168
<b>Bulgaria</b>	12	25	20	54	25	136
<b>Burundi</b>	.	.	.	5	.	5
<b>Cambodia</b>	4	12	8	14	17	55
<b>Cameroon</b>	.	3	.	18	12	33
<b>Canada</b>	.	3	.	6	.	9
<b>Chad</b>	1	16	8	35	.	60
<b>Chile</b>	48	164	74	301	29	616
<b>China</b>	81	299	107	924	178	1,589

(Continued)

# ***Refugee Status claims on hand with Refugee Status Branch, by claimant nationality.***

*Note (i): Claim(s) lodged by each claimant are categorised as either claim (initial) or subsequent claim, with subsequent claims being the second and subsequent claims lodged by a claimant.*

*Distinction between claim and subsequent presented in Application Criteria field.*

*(ii): This report regards a claim as on hand if the claim has been tendered to the Refugee Status Branch and the branch is yet to decide the claim. The number of claims on hand are presented here as at the start of the month selected in the Month field.*

*July 01, 1997 to February 05, 2012*

## ApplicationClients

	Month_OnHand					Total
	10-12 months	4-6 months	7-9 months	Less than 3 months	Over 12 months	
<b>nationality</b>						
<b>Colombia</b>	37	57	35	123	78	330
<b>Congo</b>	15	22	19	22	23	101
<b>Croatia</b>	2	.	.	.	12	14
<b>Cuba</b>	.	4	.	10	8	22
<b>Czech Republic</b>	34	197	59	499	474	1,263
<b>Democratic Republic of Congo</b>	6	40	30	79	6	161
<b>Denmark</b>	.	.	.	.	4	4
<b>Ecuador</b>	2	3	4	4	3	16
<b>Egypt</b>	5	59	16	176	77	333
<b>El Salvador</b>	.	6	.	28	.	34
<b>Eritrea</b>	9	16	12	41	9	87
<b>Estonia</b>	.	.	.	8	.	8
<b>Ethiopia</b>	24	30	18	100	28	200
<b>Fiji</b>	16	167	56	763	1	1,003
<b>France</b>	.	.	.	4	.	4
<b>Georgia</b>	5	9	9	14	.	37
<b>Germany</b>	.	.	.	30	.	30
<b>Ghana</b>	.	3	.	22	.	25
<b>Great Britain</b>	.	11	.	28	.	39
<b>Guinea</b>	3	.	2	.	3	8
<b>Guinea - Bissau</b>	.	.	.	4	.	4
<b>Hong Kong</b>	.	4	1	14	.	19

(Continued)

# ***Refugee Status claims on hand with Refugee Status Branch, by claimant nationality.***

*Note (i): Claim(s) lodged by each claimant are categorised as either claim (initial) or subsequent claim, with subsequent claims being the second and subsequent claims lodged by a claimant.*

*Distinction between claim and subsequent presented in Application Criteria field.*

*(ii): This report regards a claim as on hand if the claim has been tendered to the Refugee Status Branch and the branch is yet to decide the claim. The number of claims on hand are presented here as at the start of the month selected in the Month field.*

*July 01, 1997 to February 05, 2012*

## ApplicationClients

	Month_OnHand					Total
	10-12 months	4-6 months	7-9 months	Less than 3 months	Over 12 months	
<b>nationality</b>						
Hungary	30	187	115	456	3	791
India	124	434	242	1,060	337	2,197
Indonesia	2	15	5	54	12	88
Iran	225	670	326	1,869	385	3,475
Iraq	98	307	158	781	157	1,501
Ireland	.	.	.	5	.	5
Israel	9	41	19	109	7	185
Italy	3	3	3	4	9	22
Japan	.	.	.	2	.	2
Jordan	31	62	54	100	24	271
Kazakhstan	.	2	.	7	1	10
Kenya	.	1	.	8	.	9
Kiribati	1	9	7	15	.	32
Kuwait	8	29	12	57	11	117
Kyrgyzstan	.	18	8	33	.	59
Laos	1	13	2	22	4	42
Latvia	.	12	.	20	.	32
Lebanon	3	22	15	42	7	89
Liberia	.	2	.	4	.	6
Libya	18	28	14	36	51	147
Lithuania	12	2	.	8	24	46
Macau	.	.	.	3	.	3

(Continued)

# ***Refugee Status claims on hand with Refugee Status Branch, by claimant nationality.***

*Note (i): Claim(s) lodged by each claimant are categorised as either claim (initial) or subsequent claim, with subsequent claims being the second and subsequent claims lodged by a claimant.*

*Distinction between claim and subsequent presented in Application Criteria field.*

*(ii): This report regards a claim as on hand if the claim has been tendered to the Refugee Status Branch and the branch is yet to decide the claim. The number of claims on hand are presented here as at the start of the month selected in the Month field.*

*July 01, 1997 to February 05, 2012*

## ApplicationClients

	Month_OnHand					Total
	10-12 months	4-6 months	7-9 months	Less than 3 months	Over 12 months	
<b>nationality</b>						
<b>Macedonia</b>	5	1	6	5	3	20
<b>Madagascar</b>	.	.	.	16	6	22
<b>Malaysia</b>	6	59	25	259	27	376
<b>Mali</b>	.	7	6	12	.	25
<b>Mexico</b>	.	5	2	23	.	30
<b>Moldova</b>	3	4	6	4	.	17
<b>Mongolia</b>	3	10	6	20	6	45
<b>Morocco</b>	6	6	6	17	6	41
<b>Mozambique</b>	.	.	.	.	1	1
<b>Myanmar</b>	19	101	46	200	13	379
<b>Nauru</b>	.	6	2	6	.	14
<b>Nepal</b>	40	81	57	190	72	440
<b>Nigeria</b>	23	51	32	124	44	274
<b>North Korea</b>	3	3	3	6	.	15
<b>Oman</b>	.	.	.	4	5	9
<b>Pakistan</b>	41	170	82	420	180	893
<b>Palestine</b>	6	14	9	41	28	98
<b>Papua New Guinea</b>	.	1	.	10	.	11
<b>Peru</b>	3	13	4	40	36	96
<b>Philippines</b>	6	8	6	22	6	48
<b>Poland</b>	.	16	4	42	.	62
<b>Romania</b>	.	12	3	61	.	76

(Continued)

# ***Refugee Status claims on hand with Refugee Status Branch, by claimant nationality.***

*Note (i): Claim(s) lodged by each claimant are categorised as either claim (initial) or subsequent claim, with subsequent claims being the second and subsequent claims lodged by a claimant.*

*Distinction between claim and subsequent presented in Application Criteria field.*

*(ii): This report regards a claim as on hand if the claim has been tendered to the Refugee Status Branch and the branch is yet to decide the claim. The number of claims on hand are presented here as at the start of the month selected in the Month field.*

*July 01, 1997 to February 05, 2012*

## ApplicationClients

	Month_OnHand					Total
	10-12 months	4-6 months	7-9 months	Less than 3 months	Over 12 months	
<b>nationality</b>						
Russia	3	39	9	96	13	160
Rwanda	5	14	7	19	6	51
Samoa	.	.	.	6	.	6
Saudi Arabia	1	48	7	179	.	235
Serbia & Montenegro	.	.	.	4	.	4
Sierra Leone	2	5	1	22	35	65
Singapore	3	5	3	16	5	32
Slovakia	2	45	19	119	13	198
Solomon Islands	.	10	.	16	.	26
Somalia	57	133	99	289	26	604
South Africa	23	94	38	260	52	467
South Korea	3	9	9	20	12	53
Soviet Union	2	3	3	4	.	12
Sri Lanka	110	332	194	899	345	1,880
Stateless	.	8	2	29	1	40
Sudan	19	35	22	71	21	168
Syria	12	79	22	205	35	353
Taiwan	.	1	.	7	.	8
Tanzania	3	.	2	.	2	7
Thailand	39	185	86	908	34	1,252
Togo	.	6	.	16	4	26
Tunisia	.	6	2	16	.	24

(Continued)

## ***Refugee Status claims on hand with Refugee Status Branch, by claimant nationality.***

*Note (i): Claim(s) lodged by each claimant are categorised as either claim (initial) or subsequent claim, with subsequent claims being the second and subsequent claims lodged by a claimant.*

*Distinction between claim and subsequent presented in Application Criteria field.*

*(ii): This report regards a claim as on hand if the claim has been tendered to the Refugee Status Branch and the branch is yet to decide the claim. The number of claims on hand are presented here as at the start of the month selected in the Month field.*

*July 01, 1997 to February 05, 2012*

### ApplicationClients

	Month_OnHand					Total
	10-12 months	4-6 months	7-9 months	Less than 3 months	Over 12 months	
<b>nationality</b>						
Turkey	18	32	33	95	62	240
Tuvalu	.	.	.	3	.	3
Uganda	1	11	8	26	16	62
Ukraine	.	4	1	18	7	30
United Arab Emirates	.	.	.	9	.	9
United States of America	.	4	1	18	.	23
Uruguay	.	3	1	6	7	17
Uzbekistan	.	2	.	8	.	10
Vanuatu	.	1	.	4	.	5
Vietnam	17	56	30	98	37	238
Yemen	.	3	1	8	.	12
Yugoslavia	6	6	3	9	69	93
Zambia	1	.	2	.	.	3
Zimbabwe	97	340	173	770	105	1,485
<b>Total</b>	1,560	5,520	2,764	14,875	3,754	28,473