

Immigration: Identity & Innovation

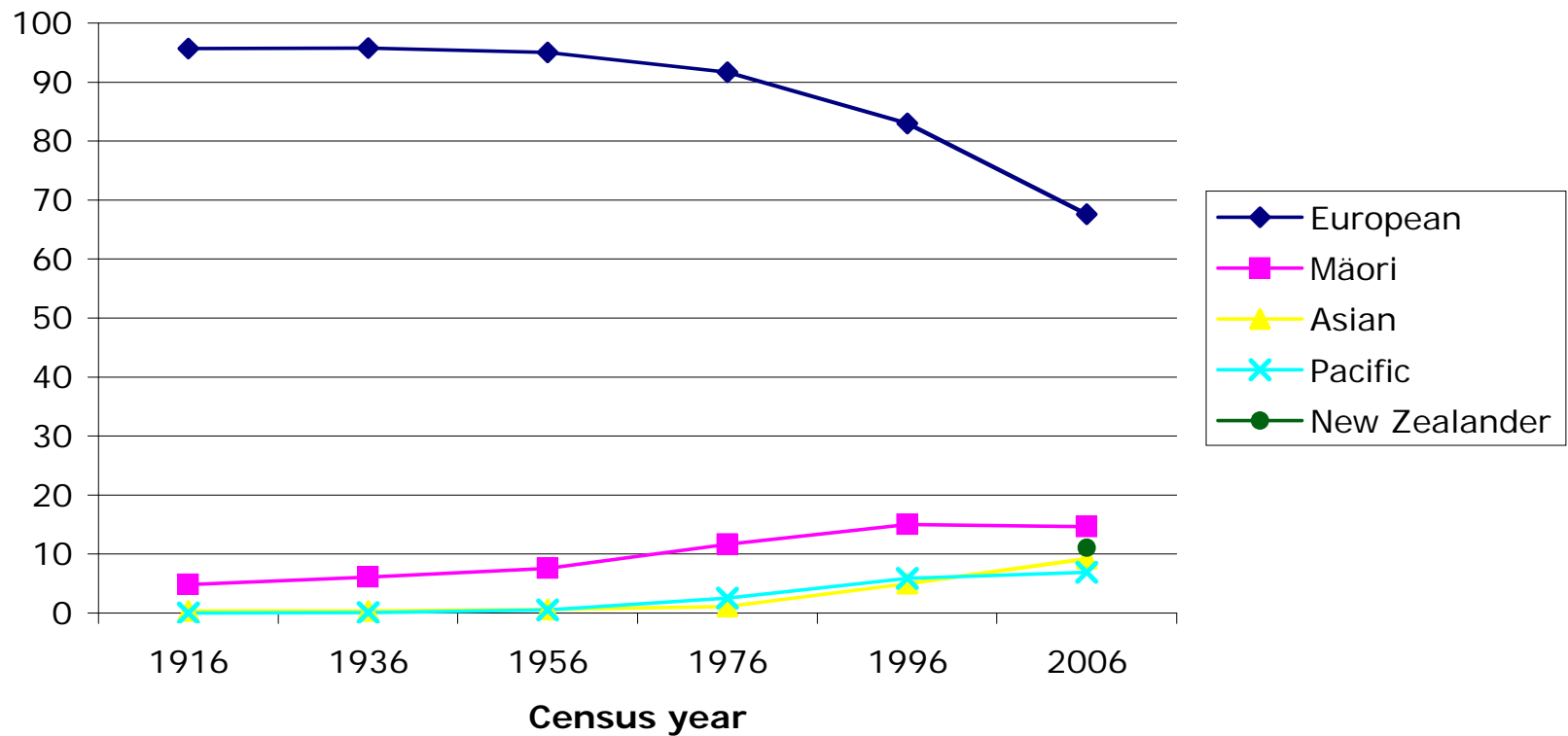
Metropolis Plus conference, Te
Papa, 15 October 2007



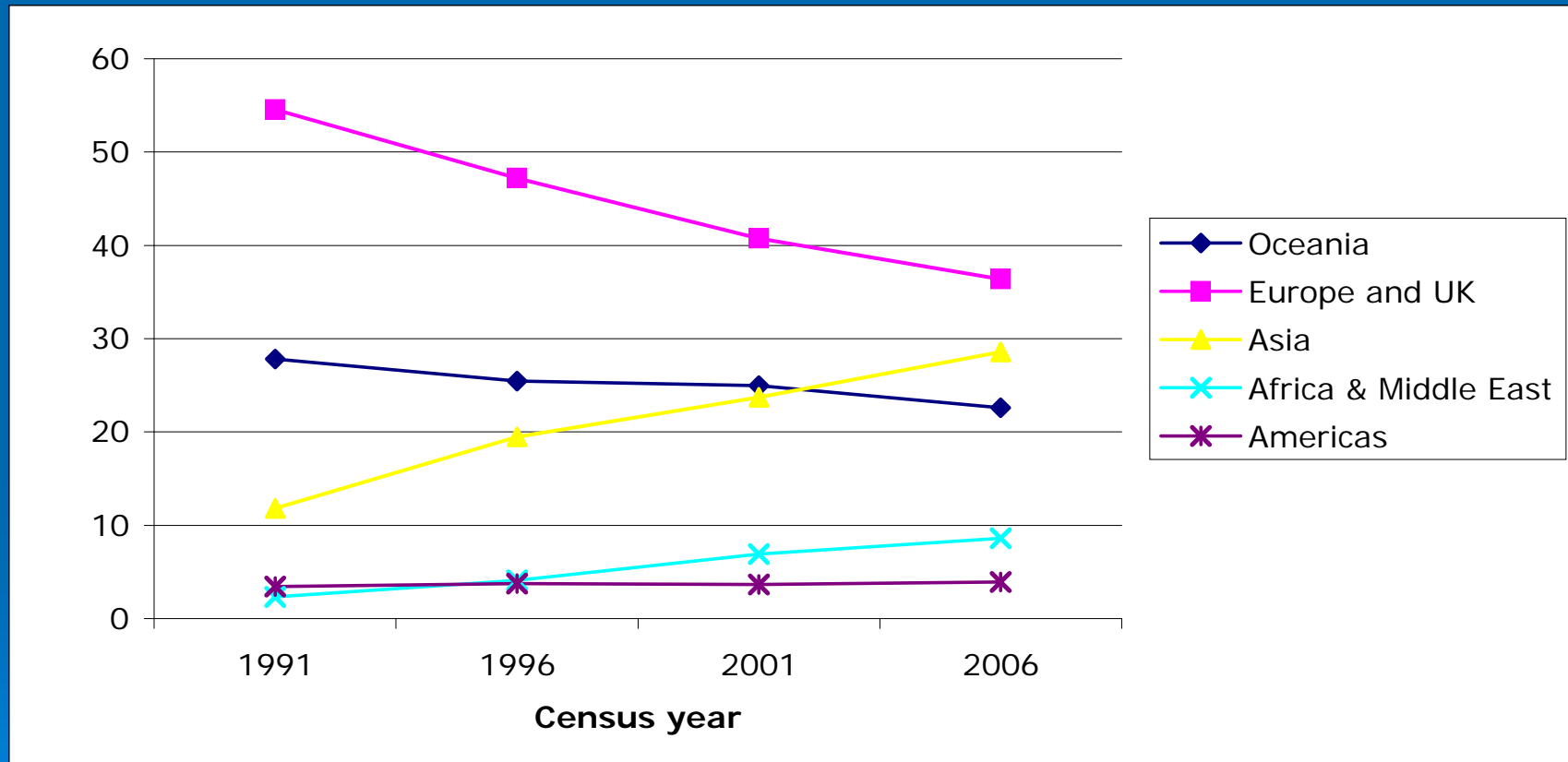
STANFORD
UNIVERSITY

Tahu Kikutai

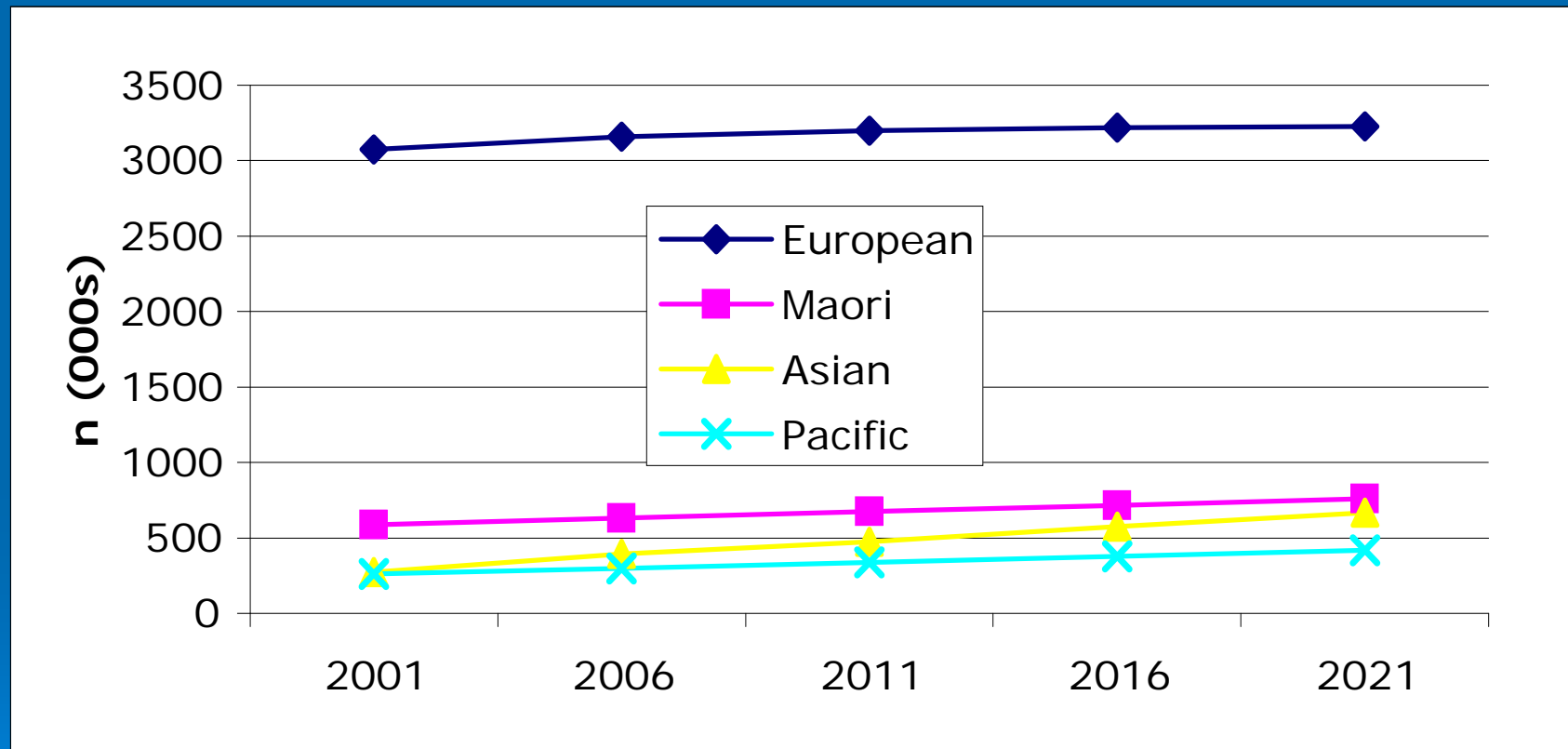
Declining “European” dominance?



Changing composition of NZs foreign born pop.

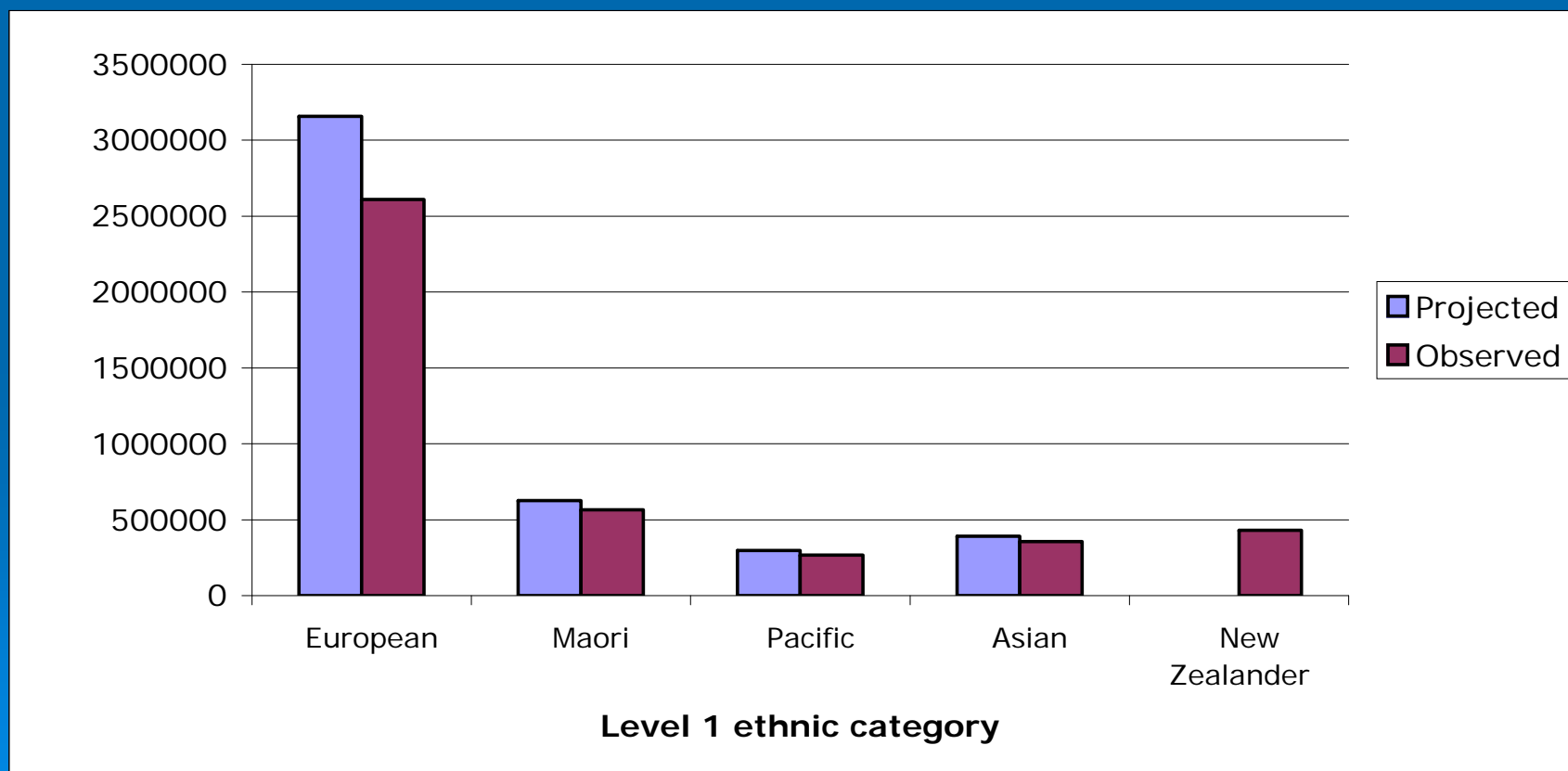


Projections for main ethnic groupings: 2001-2021

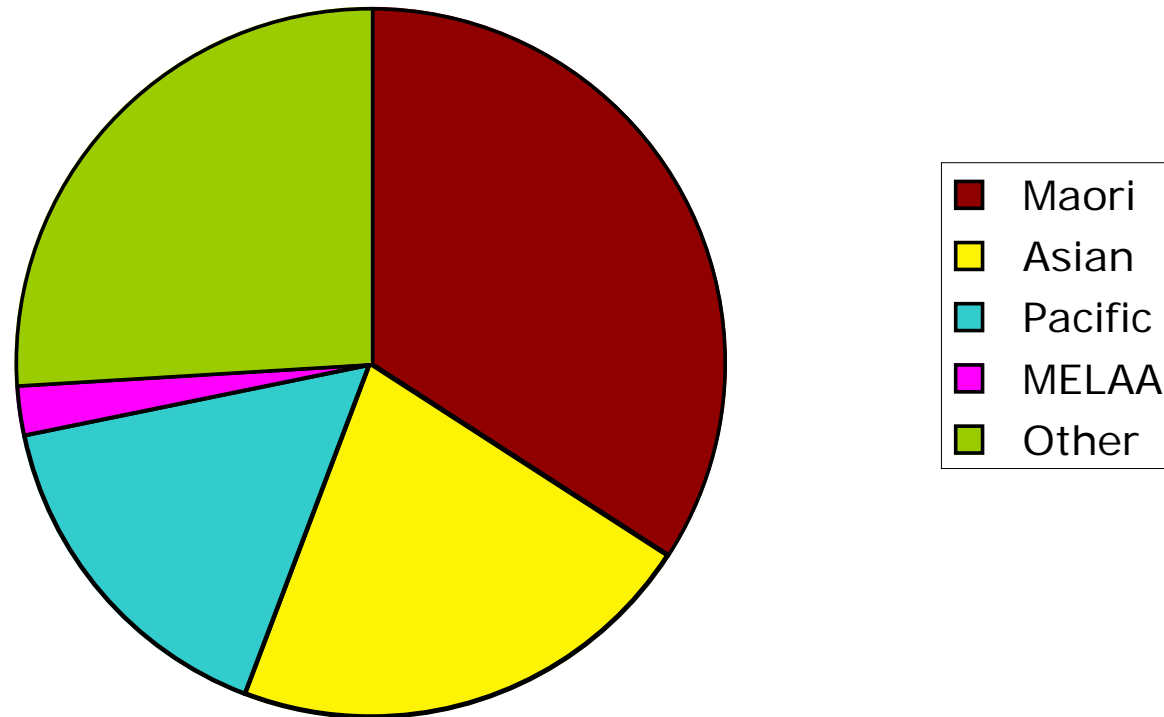


Source: SNZ, Series 6 projections. Level 1 ethnic categories, 2001 baseline.

2006: Projected vs. Observed

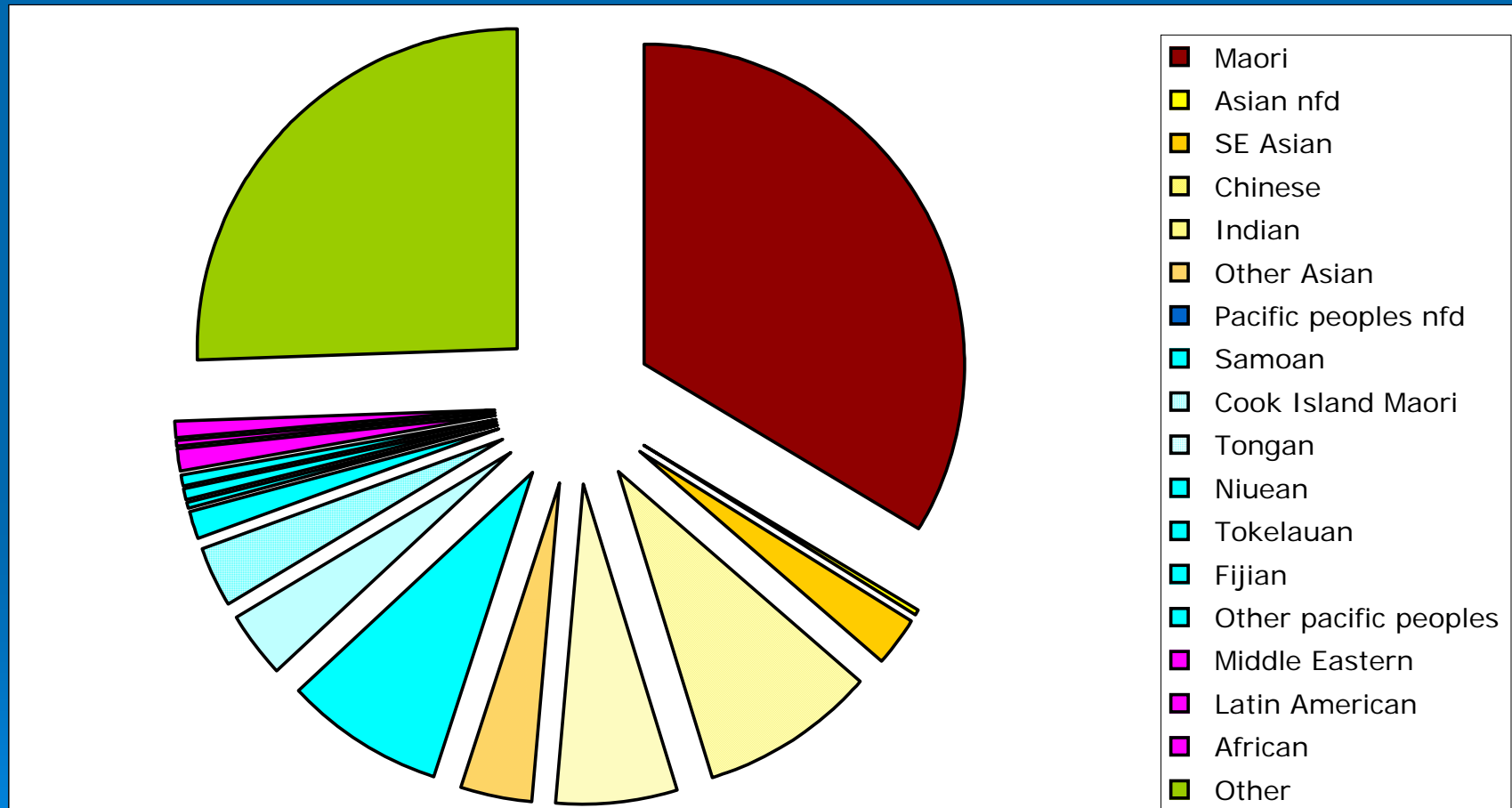


How much of the “minority” pie?




Source: 2006 census, Level 1 ethnic categories

Same pie, sliced differently



Source: 2006 census, Level 2 ethnic categories

Innovation through intermarriage?

- The “Maorasian”
 - Reconciling group stereotypes
 - How common is inter-ethnic marriage?
- 

Ethnic partnering choices of men

Women

Men	% →	Euro.	Maori	Pacific	Asian
	Euro.	96	6	1	2
Maori	58	53	4	1	
Pacific	25	15	70	2	
Asian	9	2	2	90	

Source: Callister, Didham & Potter, 2005: Table 5. 2001 census data

Where to from here?

- Problem indigenes and model minorities
- Ambivalence towards immigration
- Biculturalism and multiculturalism
- Competitive vs co-operative relations?