

## At a glance

[newzealand.govt.nz](http://newzealand.govt.nz)

### PUBLICATION:

### SETTLEMENT



## DEVELOPING A NEW ZEALAND SETTLEMENT KNOWLEDGE BASE:

### PHASE ONE WORKING PAPER – A FRAMEWORK AND INITIAL INDICATORS

The development of the Settlement Knowledge Base (SKB) is part of the Settlement National Action Plan. It is a cross-agency government initiative led by the New Zealand Department of Labour.

The aim of the overall SKB project is to build an improved understanding of settlement outcomes for newcomers to New Zealand across central government agencies through a work programme which:

- identifies outcome-related measures and indicators at a range of levels;
- maps the knowledge base and identifies research gaps; and
- identifies research investment strategies and collaborative opportunities to enhance research knowledge and capacities.

Work has recently been completed on the first phase of the SKB project – the development of a Settlement Knowledge Base framework and an initial identification of indicators relating to the New Zealand Settlement Strategy.

This framework has been developed as an initial research platform for discussion and for mapping the settlement-related evidence base. It has been titled the Newcomer Settlement Continuum (NSC) to signal the fluid nature of the settlement process. The NSC is illustrated over.

In the NSC, *newcomers* are defined as non-New Zealanders coming to live, learn and work in New Zealand for a short (temporary) or long term (permanent residence) basis including:

- non-New Zealanders who accompany returning New Zealanders and who intend to live, learn and/or work in New Zealand;
- International students;
- non-New Zealanders who return repeatedly to live, learn and/or work in New Zealand over a period of time (eg. Recognised Seasonal Employer workers).

In the NSC, *settlement* is a non-linear journey. For the purposes of the framework, three key areas of focus have been identified. These are Pre-arrival; Arrival and settling; and Integrated/settled.

- Pre-arrival*: refers to a period leading up to moving to New Zealand.
- Arrival and Settling*: refers to a period post-arrival in New Zealand where there is high settlement focused activity for both newcomers and New Zealand communities.
- Integrated and settled*: refers to newcomers who can access all mainstream services should they wish to and do not require targeted settlement services to do so.

More information about the NSC can be found in the Working Paper which can be downloaded from the New Zealand Department of Labour's website: <http://www.dol.govt.nz/publications/research/skb>  
For further information please email [research@dol.govt.nz](mailto:research@dol.govt.nz)

PACIFIC

YOUTH

LISNZ

SETTLEMENT

FAMILY

ECONOMIC

GLOBAL MOBILITY

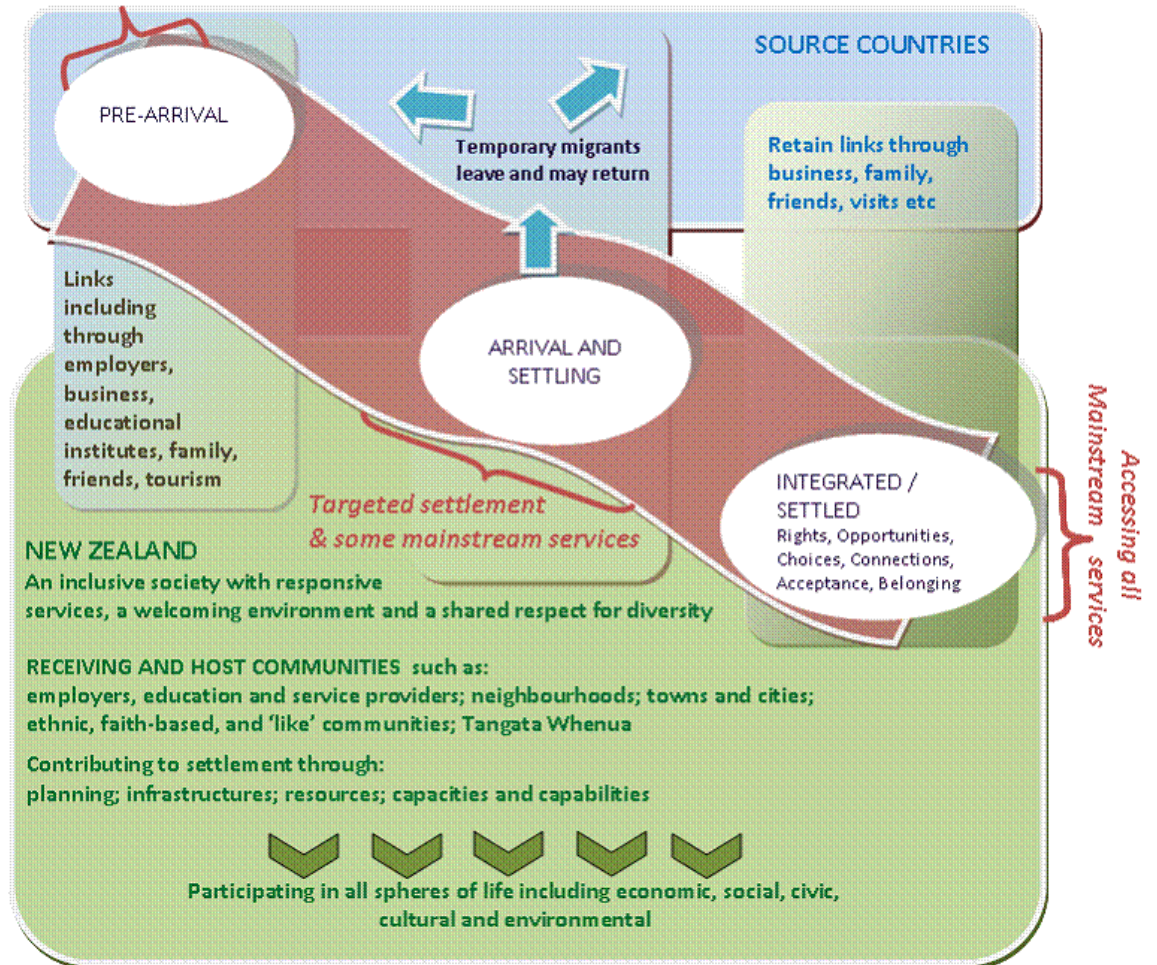
REFUGEE

CRIME

## THE NEWCOMER SETTLEMENT CONTINUUM (NSC)

TIMEFRAME: Emphasis on services available for first five years

*Targeted pre-arrival information & activities*



### FACTORS AND MEASURES

Newcomers and New Zealand communities

- Expectations
- Attitudes
- Knowledge
- Actions/Experience
- Outcomes